

Retina

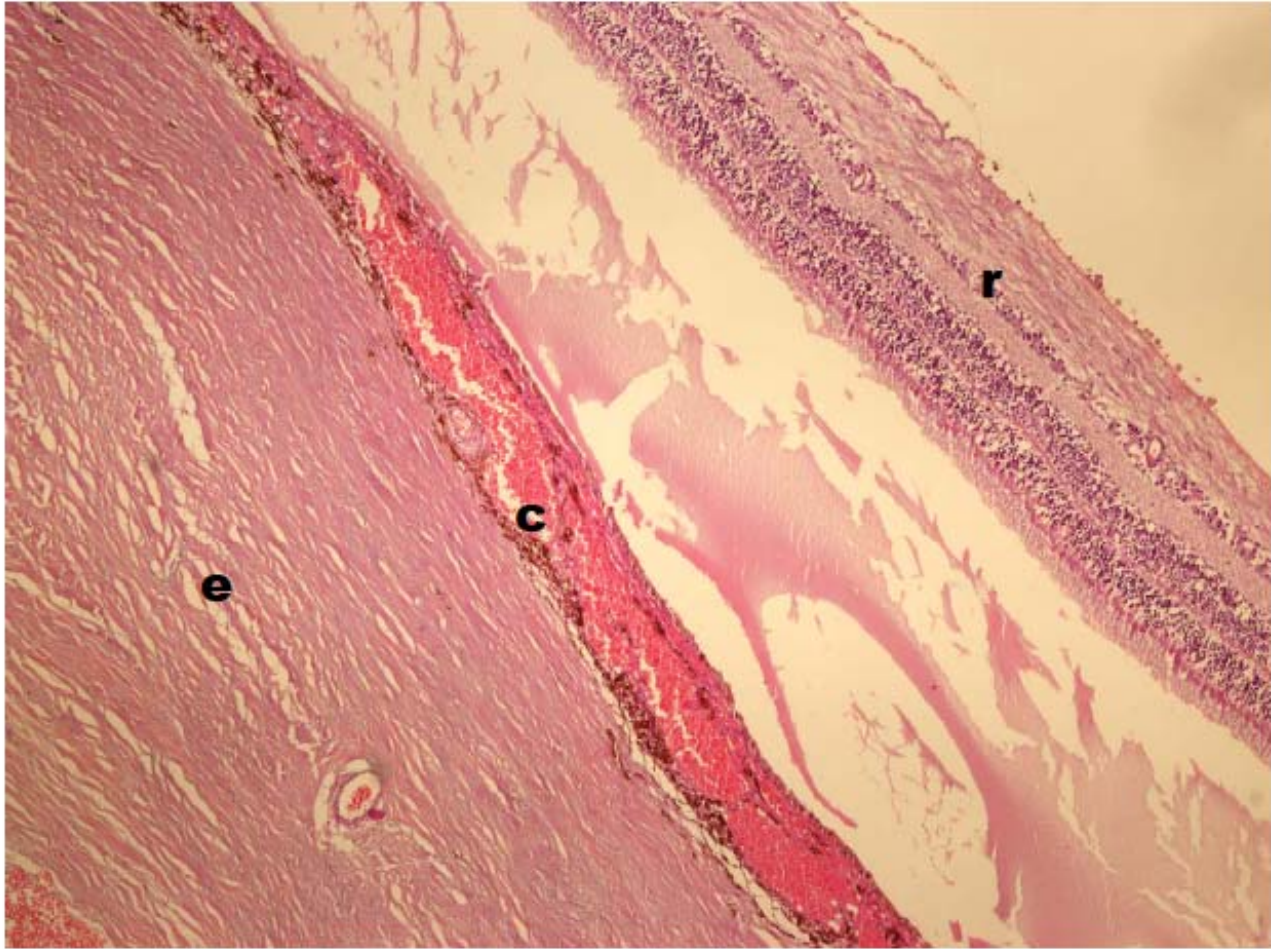
---

Coroides

---

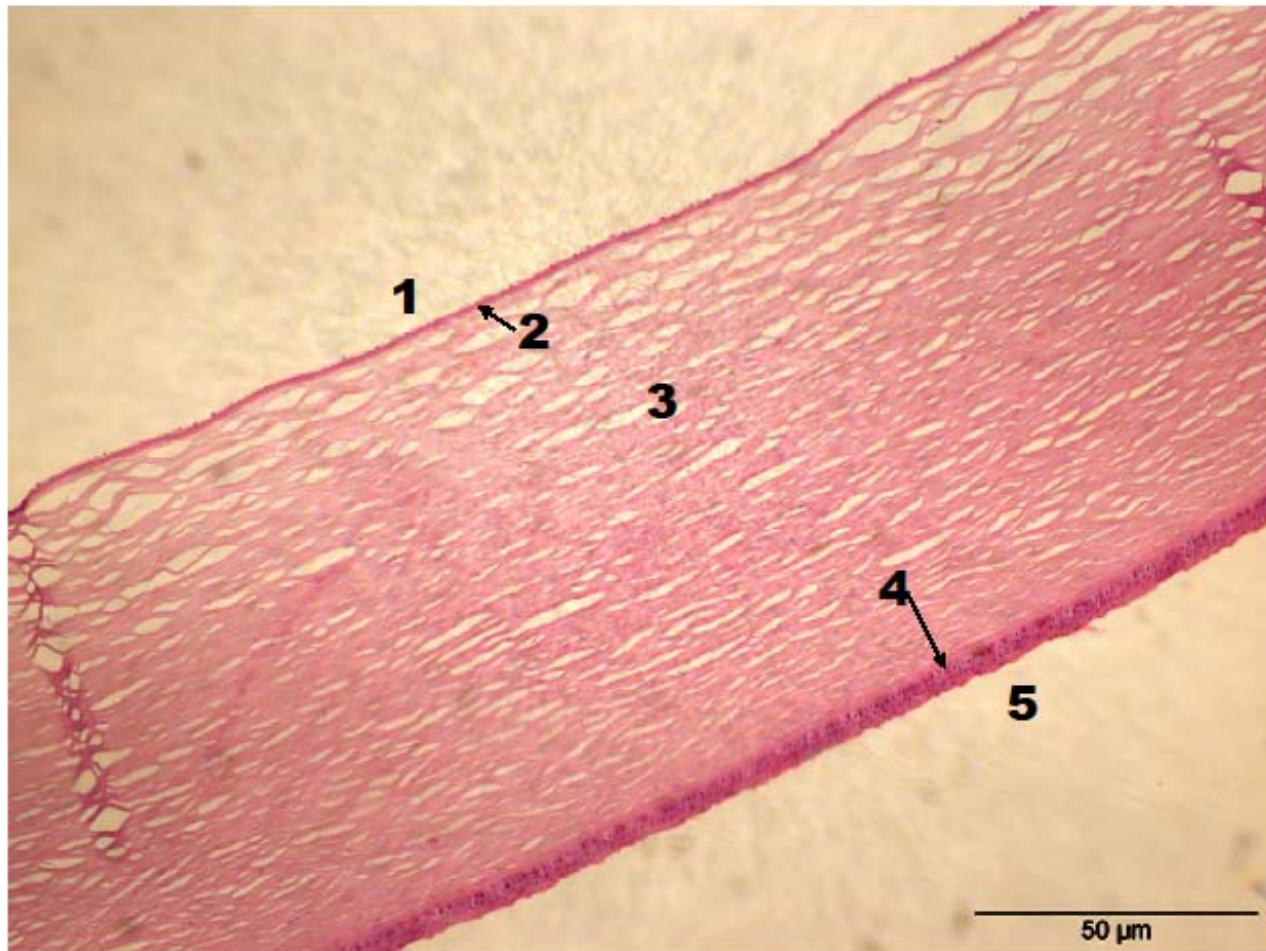
Esclerótica

Capas de la Pared Ocular

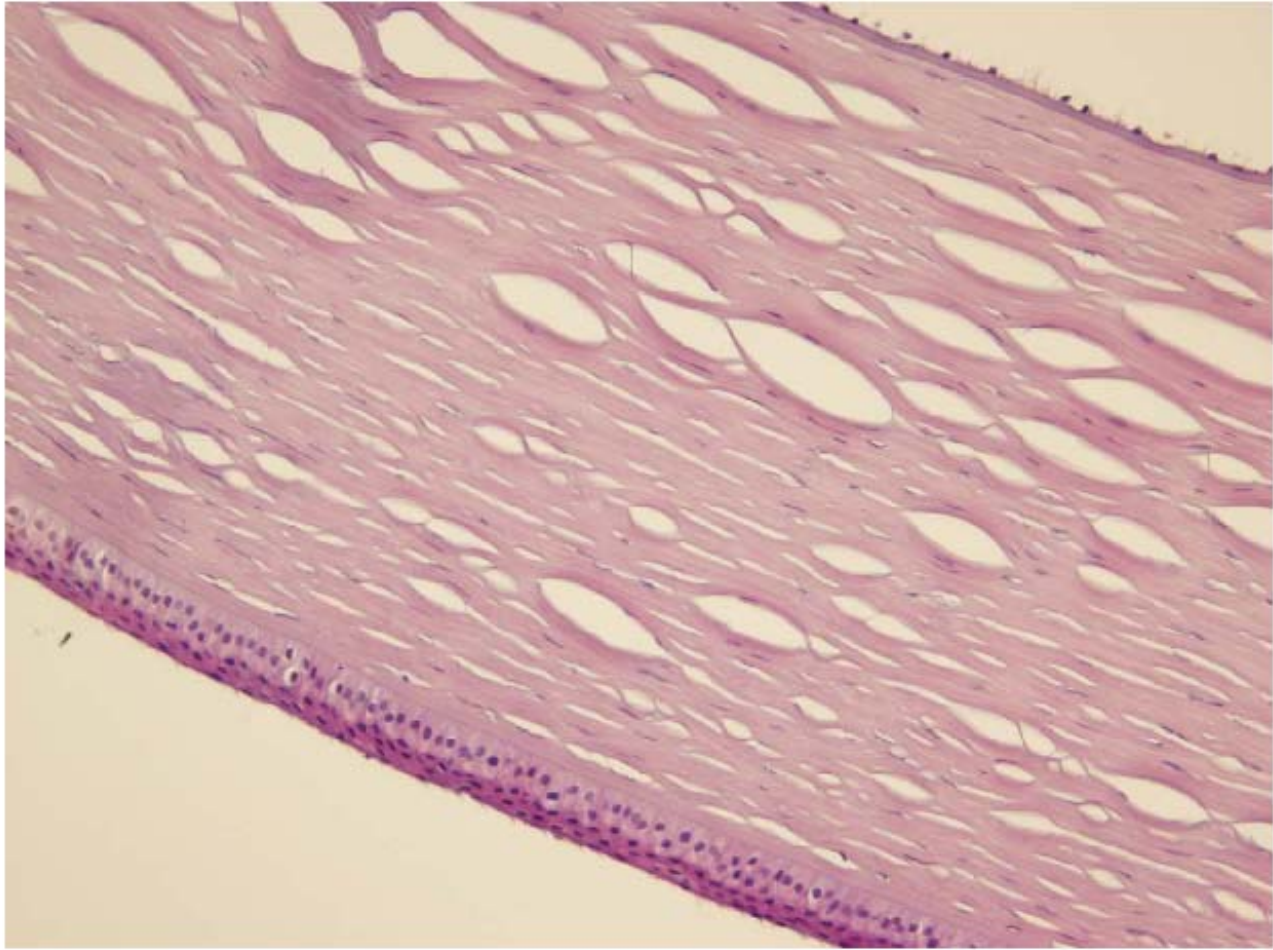


**e: esclerótica, c: coroides, r: retina desprendida**

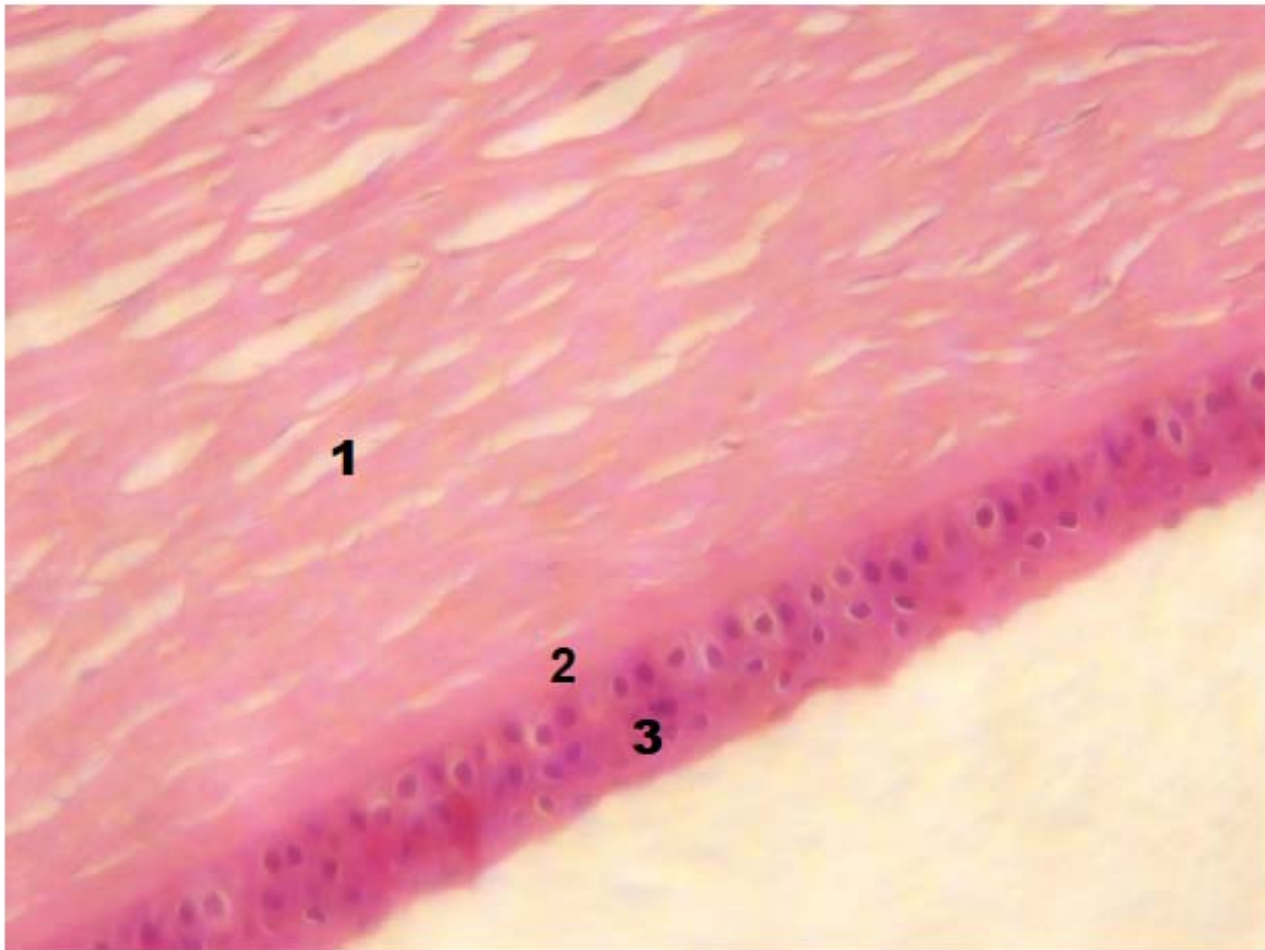




**CÓRNEA: 1: endotelio, 2: mb. Descemet (flecha), 3: estroma, 4: mb. Bowman, 5: epitelio**

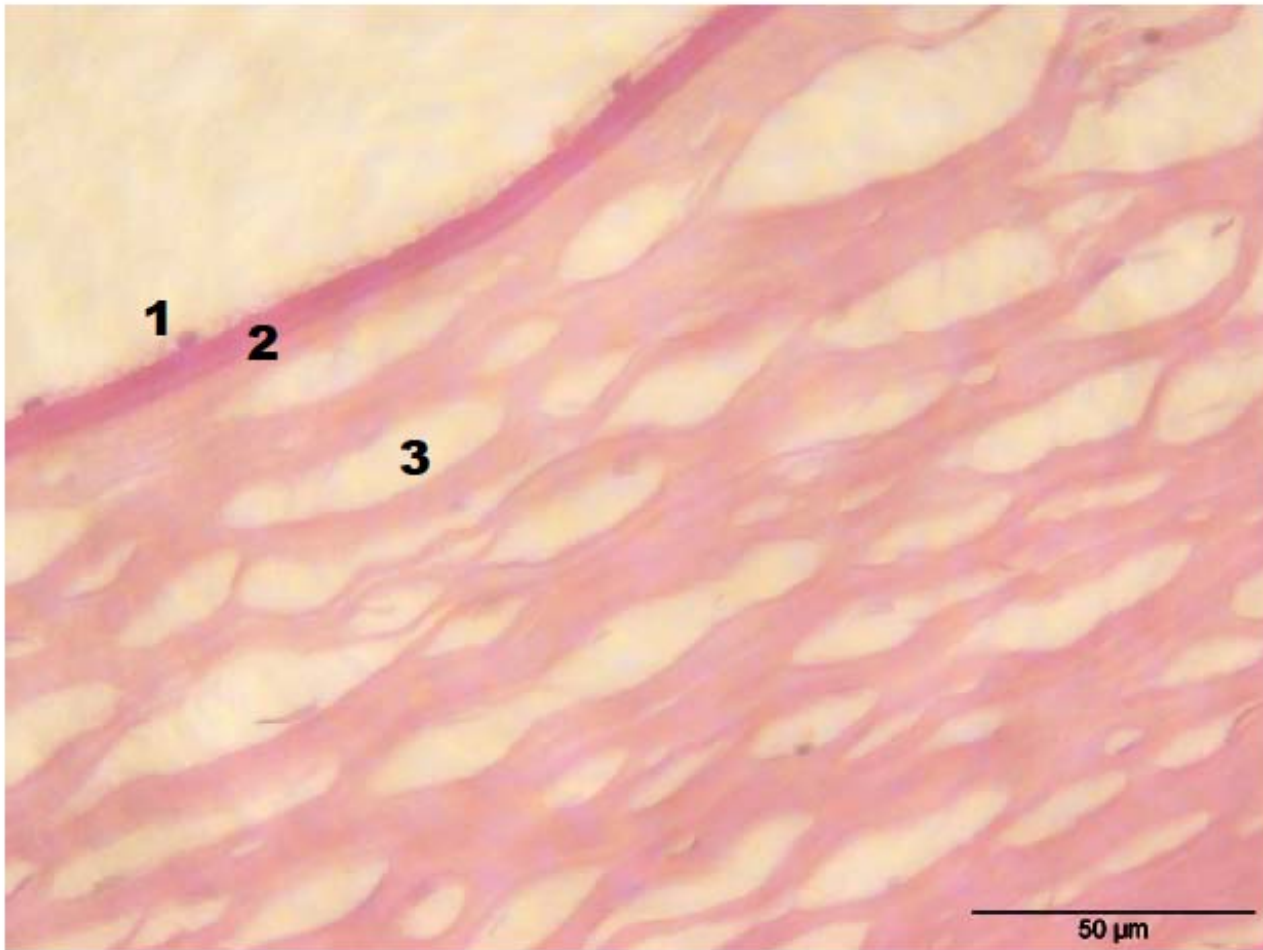


**CÓRNEA**



**Córnea: 1 estroma, 2 mb. Bowman, 3 epitelio**

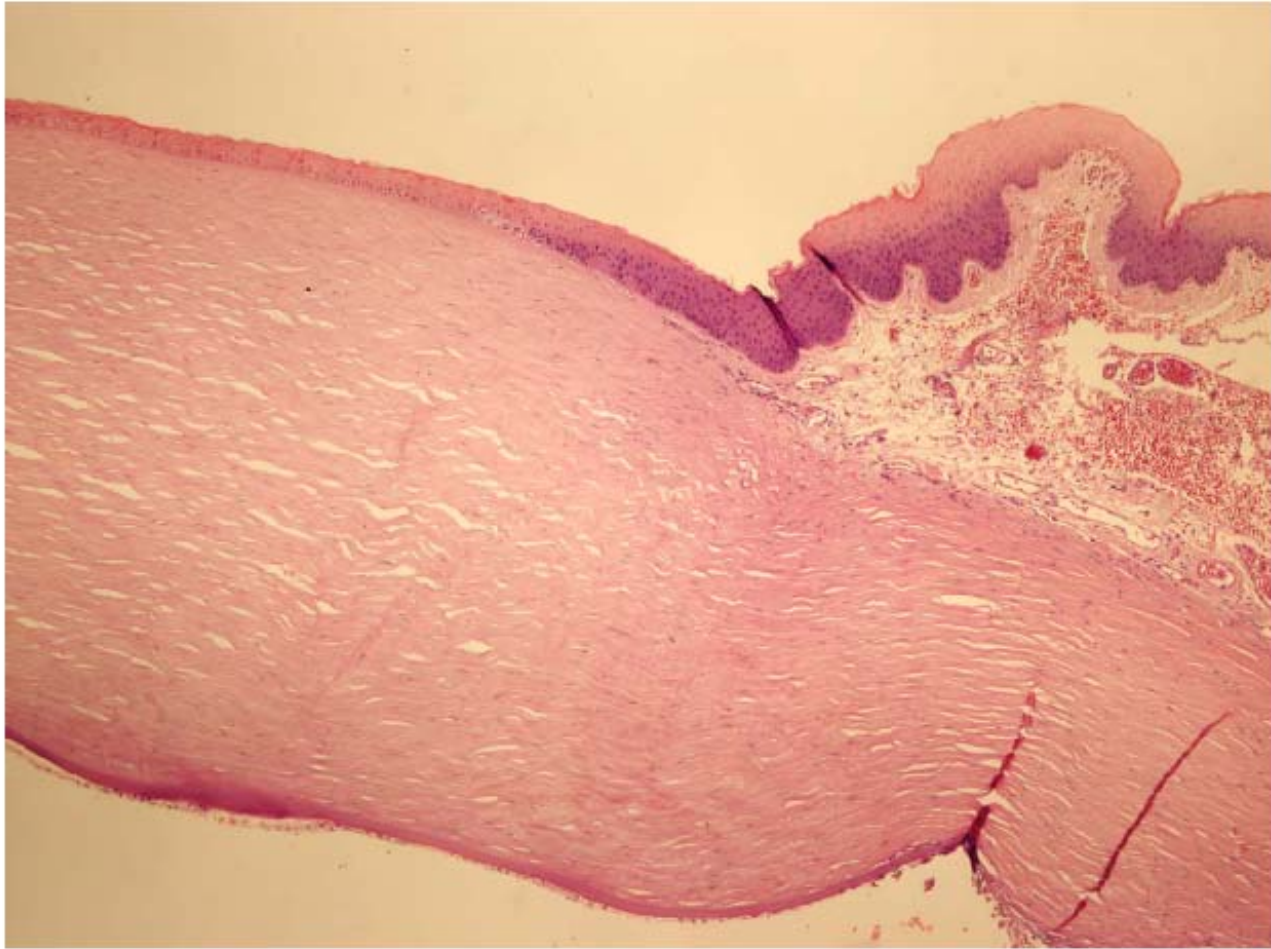




**Córnea. 1: endotelio, 2: mb Decemet, 3: estroma**

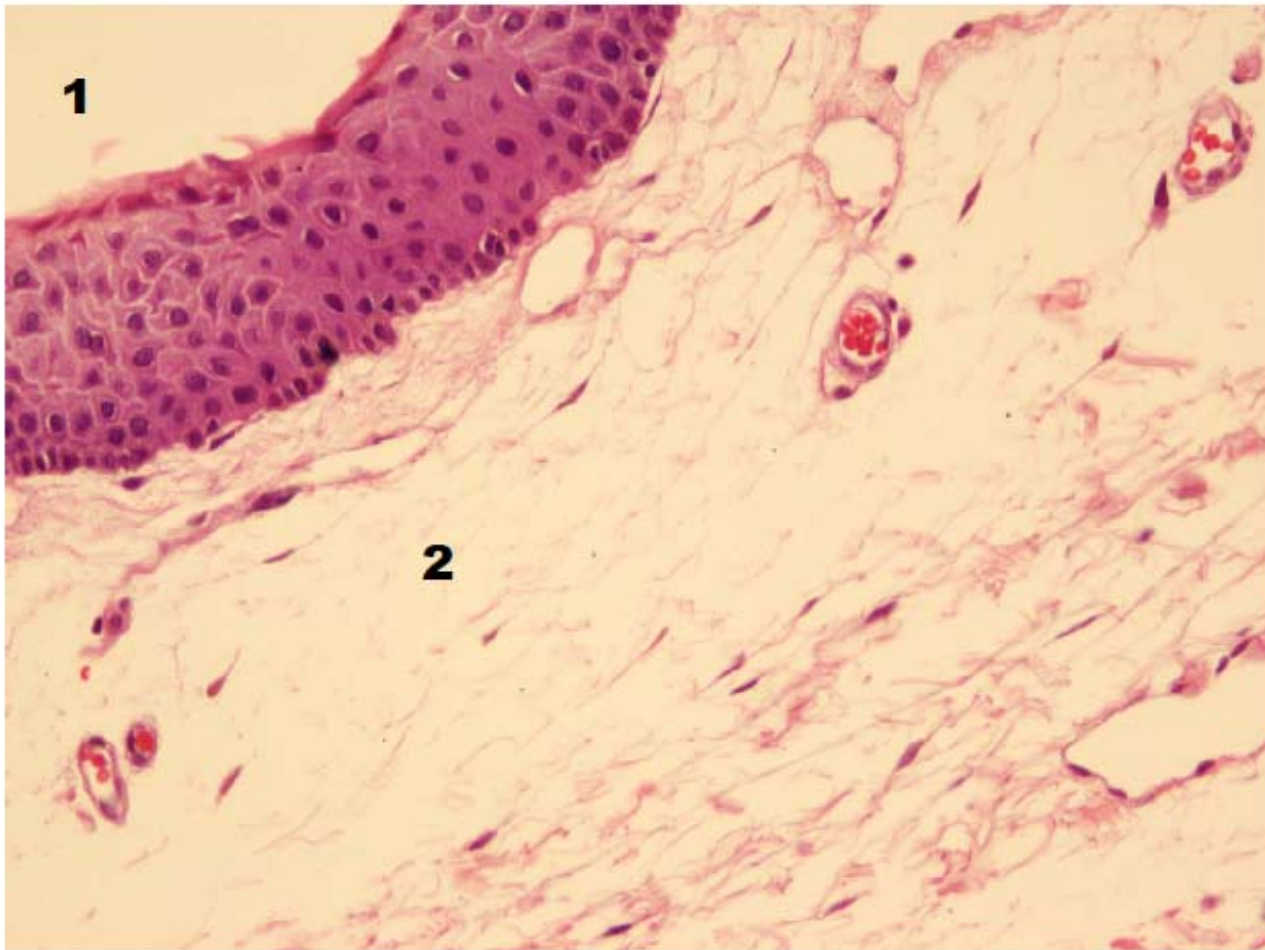


**Transición córnea-conjuntiva. 1: córnea, 2: conjuntiva**

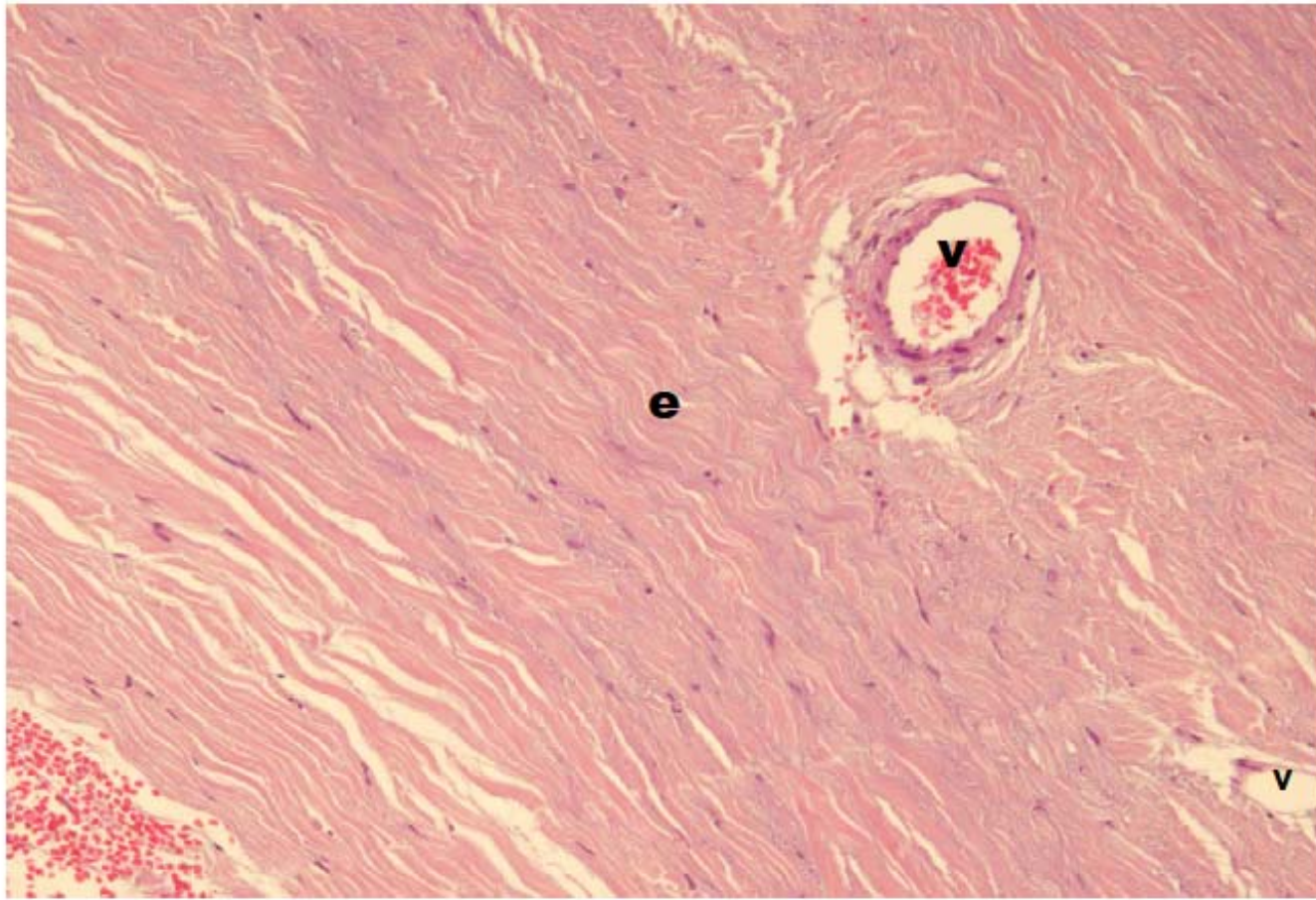


**Transición córnea-conjuntiva.**





**1: conjuntiva, 2: epiesclera**

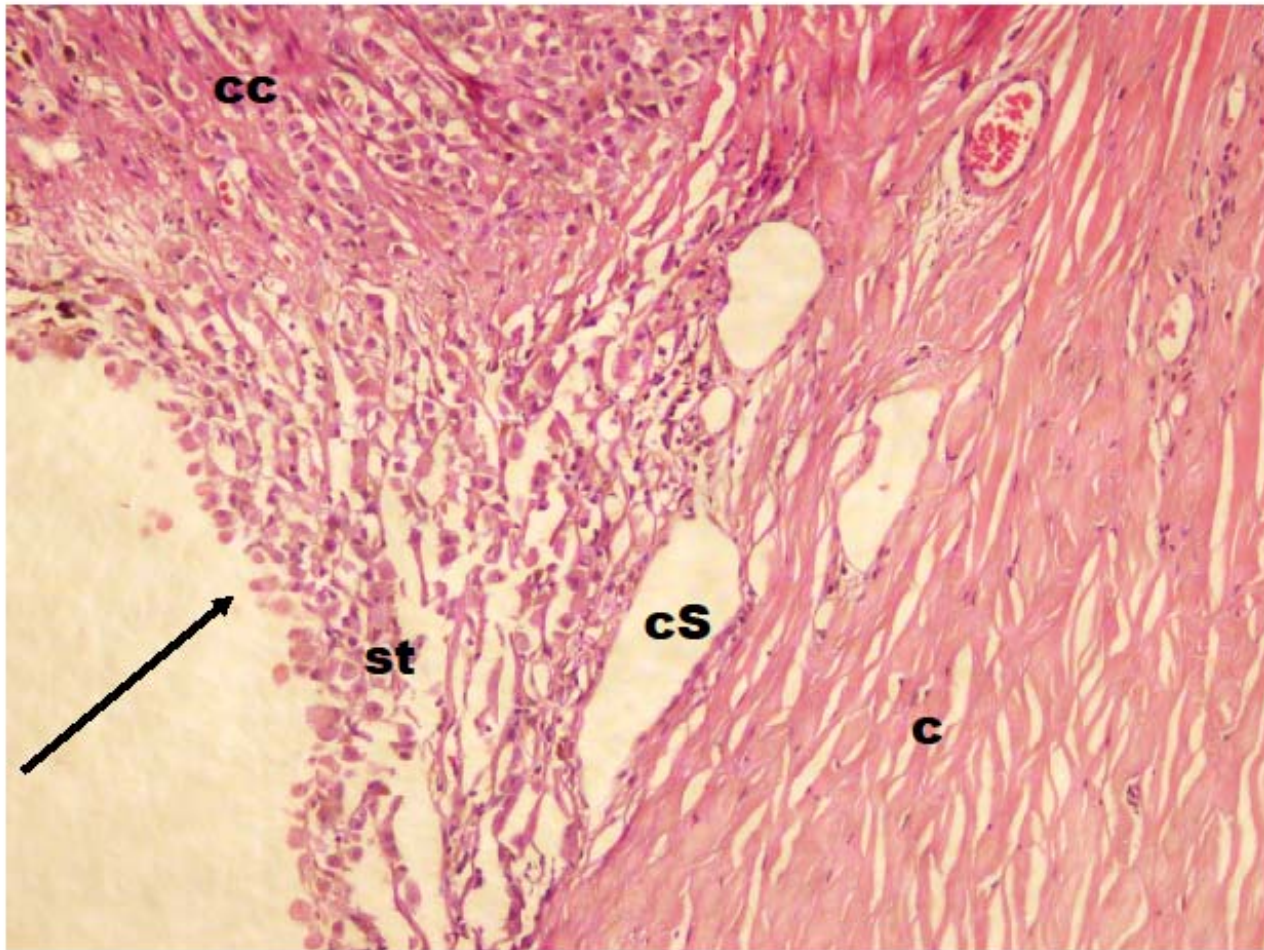


**e: esclerótica, v: vaso**

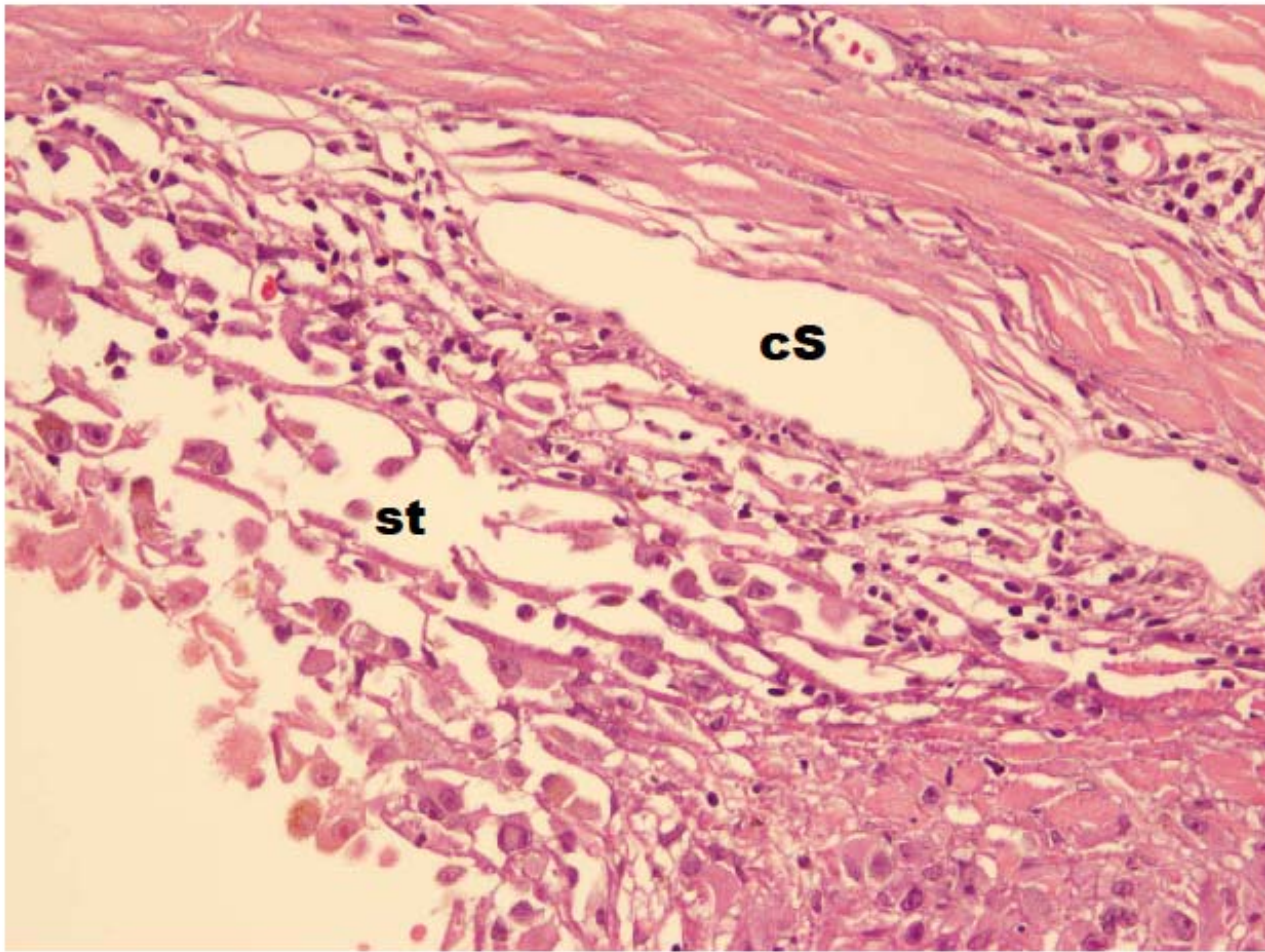


**Ángulo irido-corneal (flecha). c: córnea, i: iris. cc: cuerpo ciliar, ss. trabecular y conducto de Schlemm (cuadrado)**



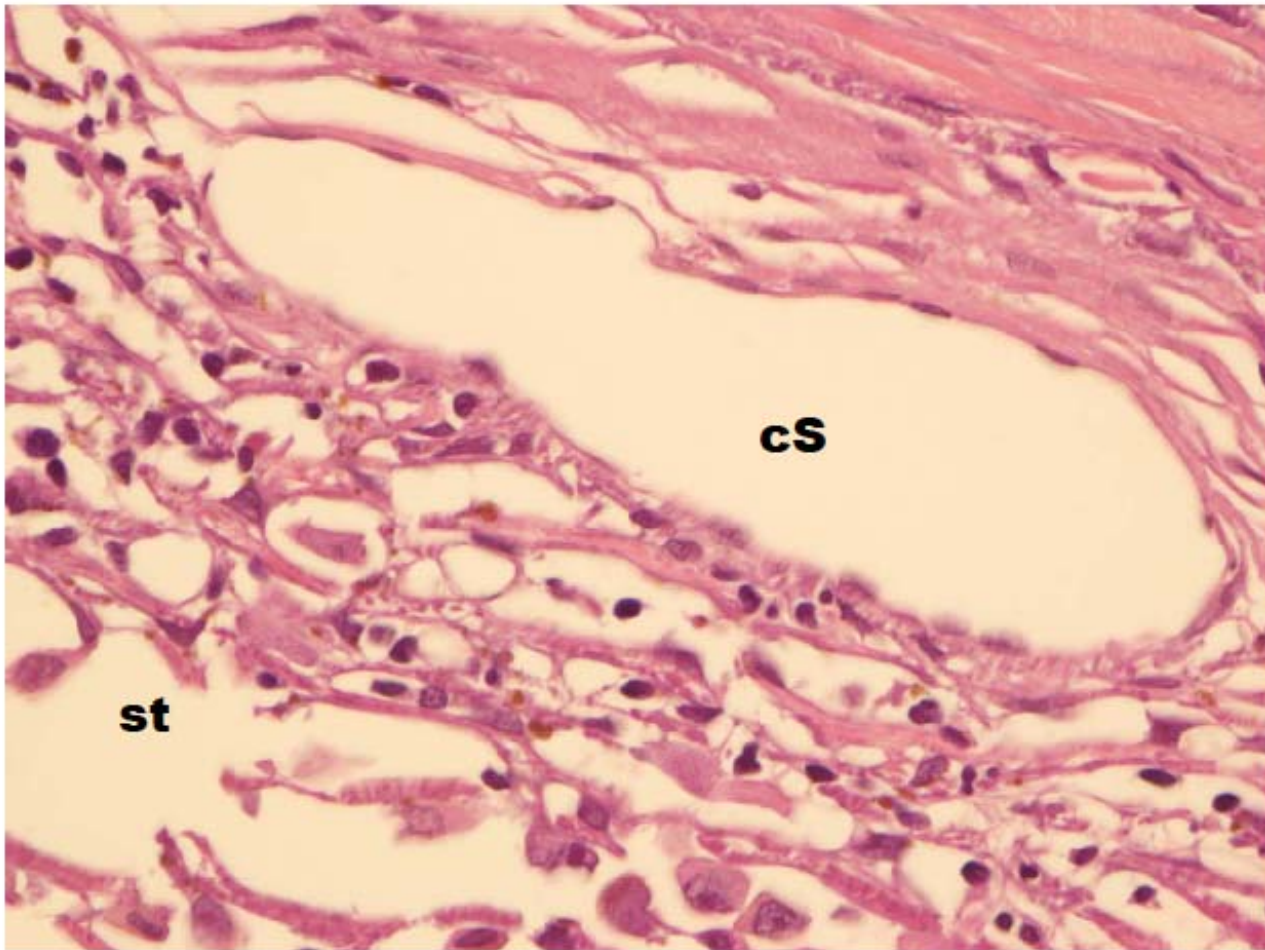


**Ángulo irido-corneal (flecha). c: córnea, cc: cuerpo ciliar, st: sistema trabecular. cS: conducto de Schlemm**



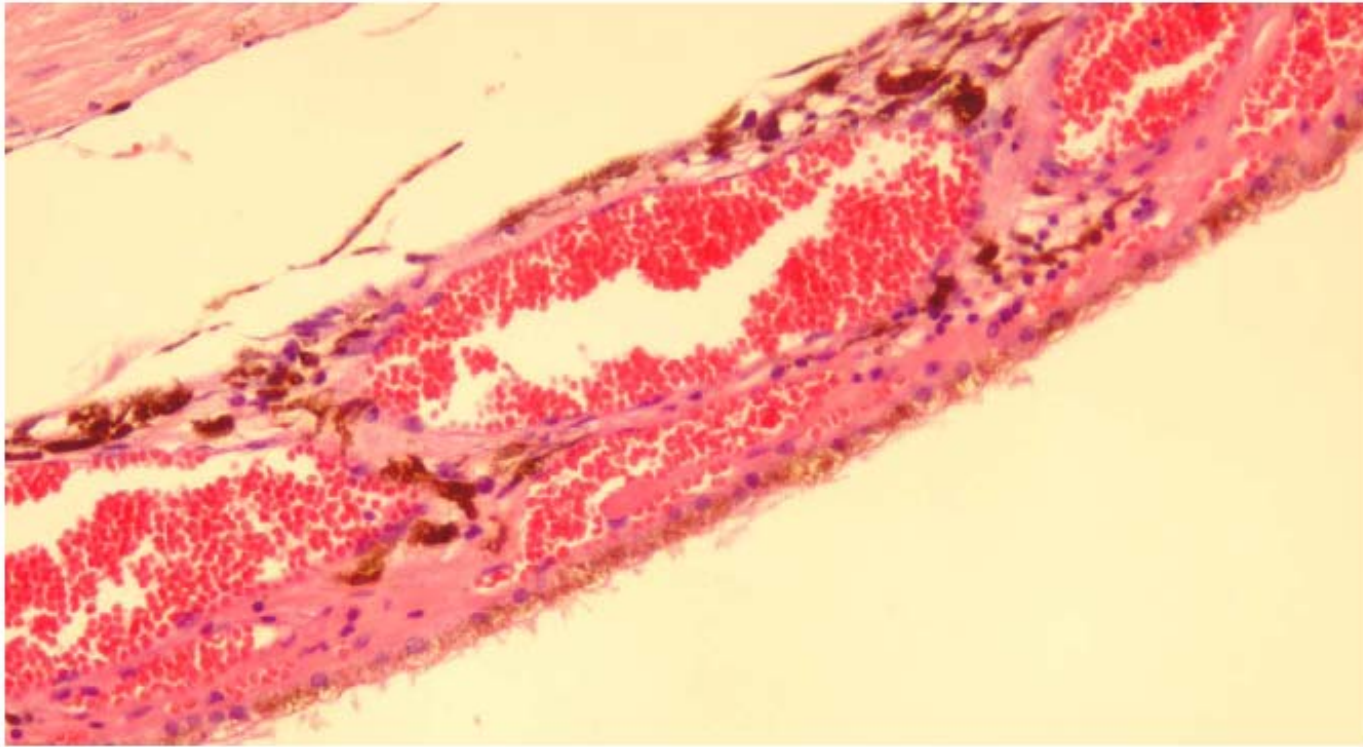
**st: sistema trabecular. cS: conducto de Schlemm**



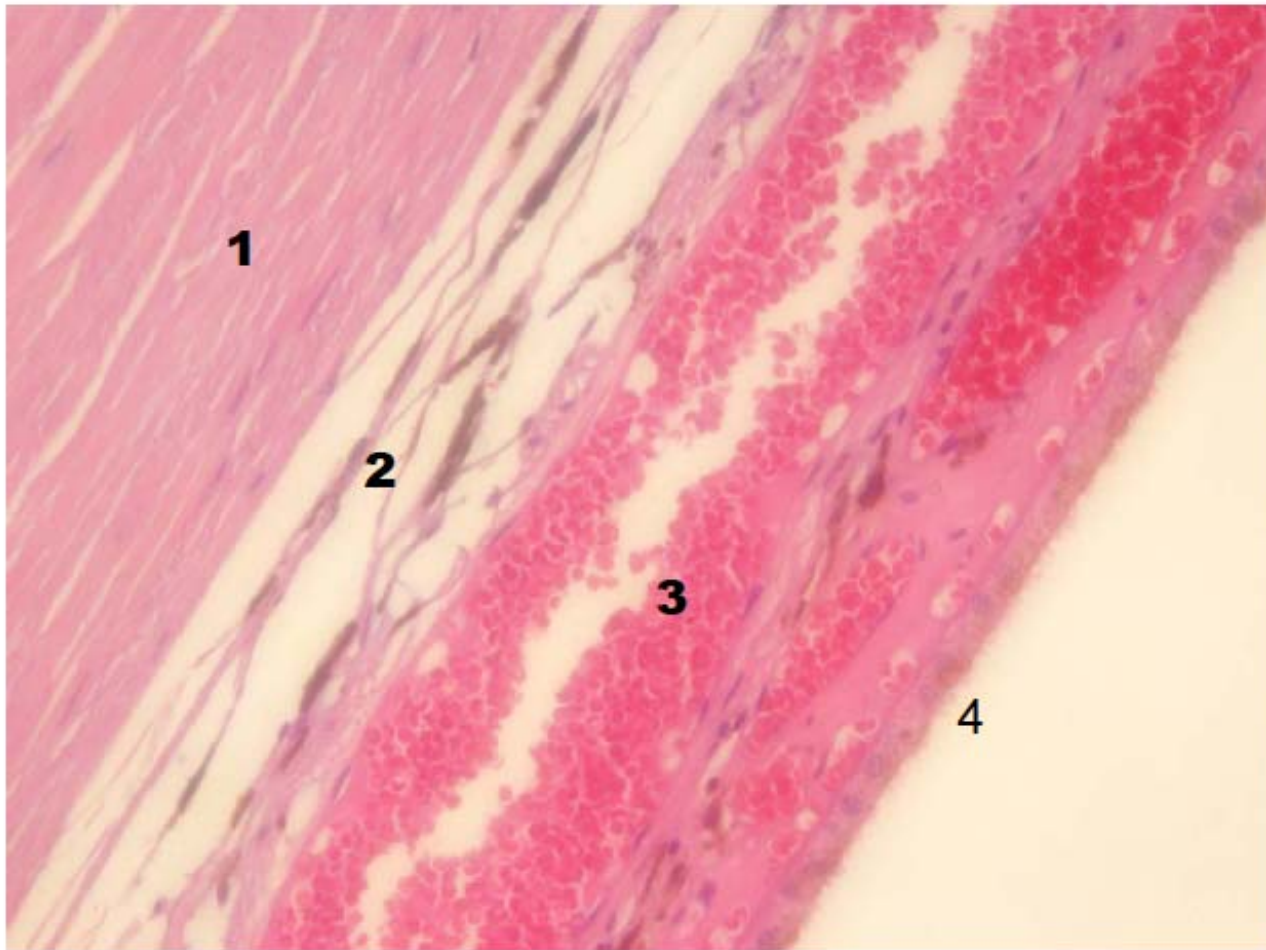


**st: sistema trabecular. cS: conducto de Schlemm**

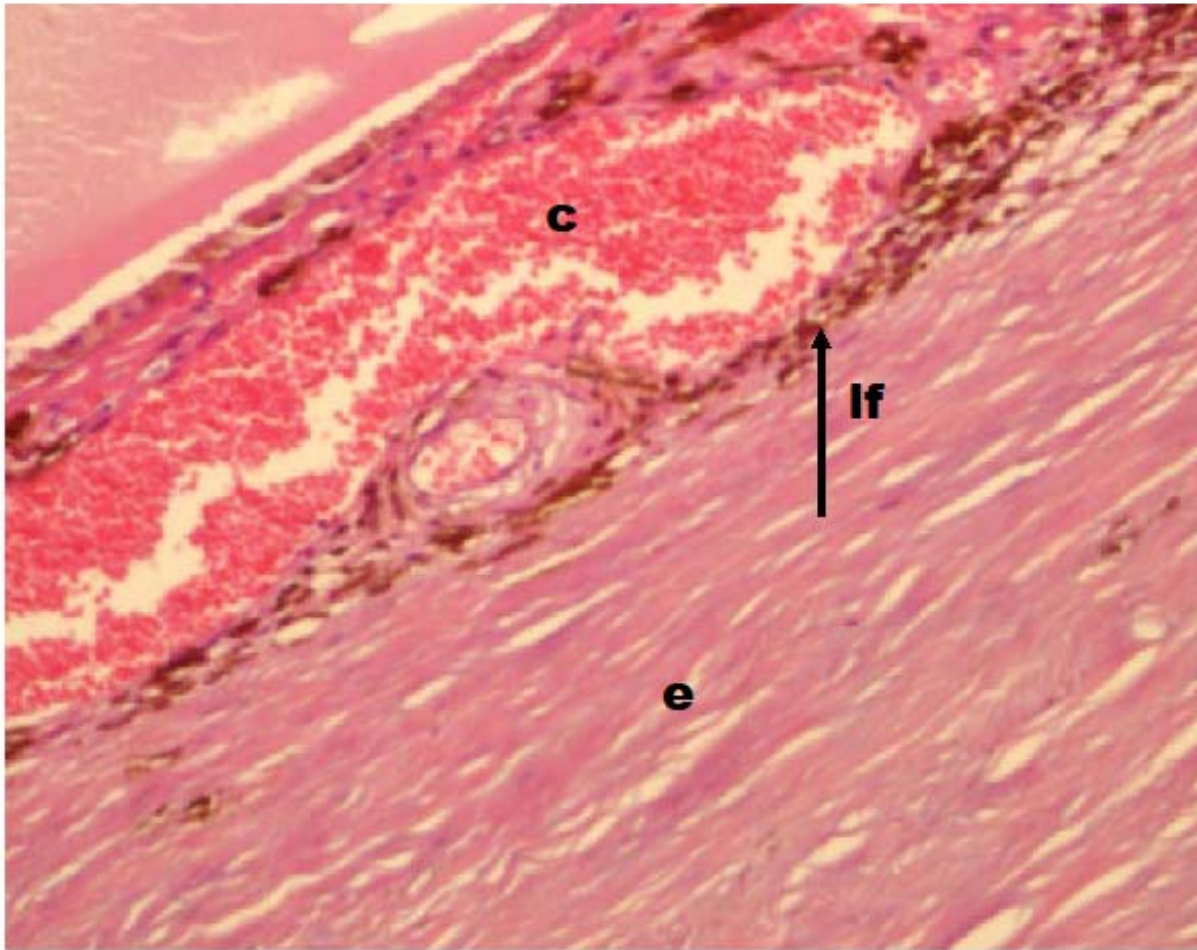




**coroides**

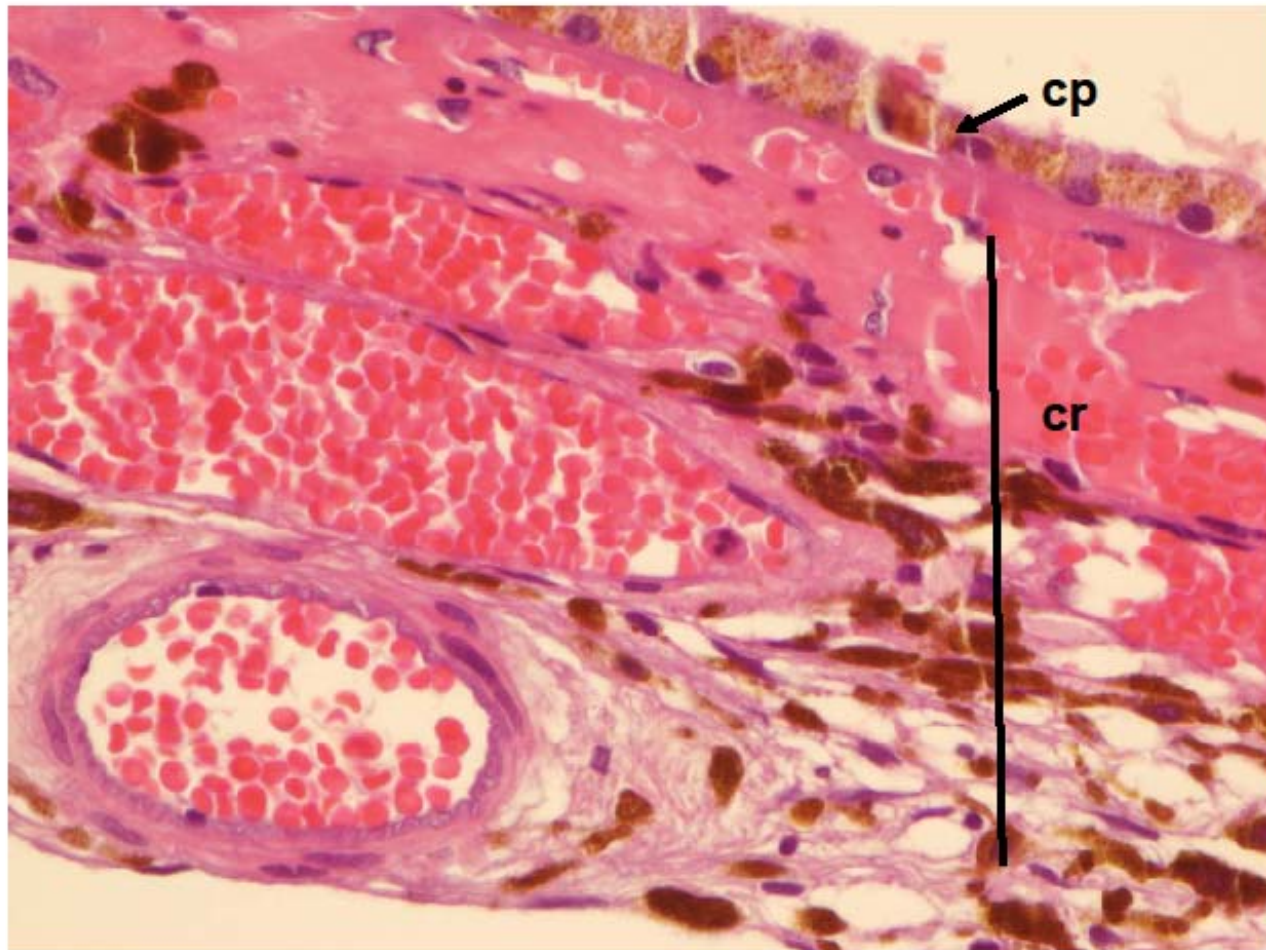


**1: esclerótica, 2: lámina fusca, 3: coroides, 4: epitelio pigmentario de la retina**



**e: esclerótica, c: coroides, lf: lámina fusca (flecha)**



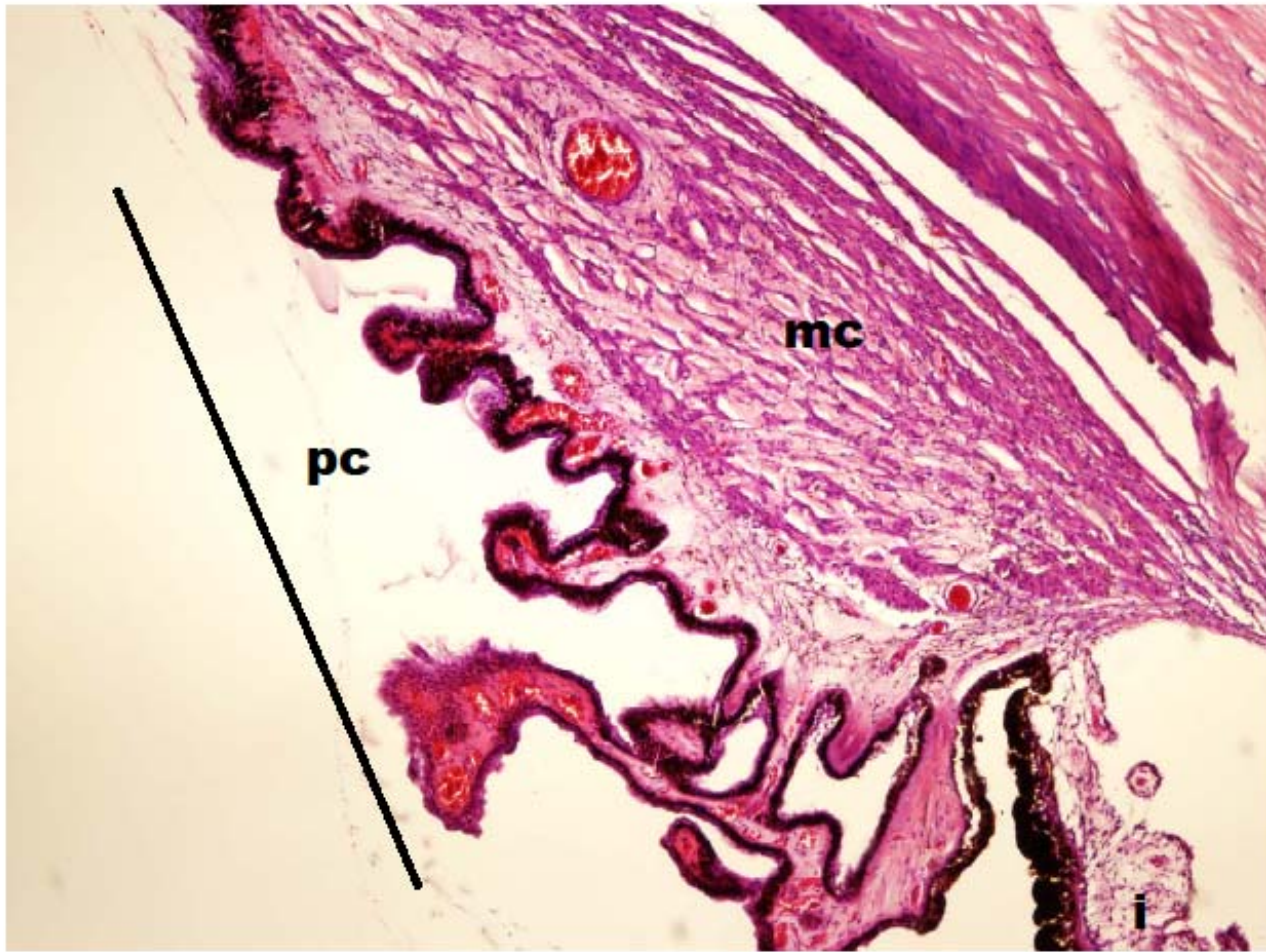


**cr: coroides. cp: capa pigmentaria de la retina**



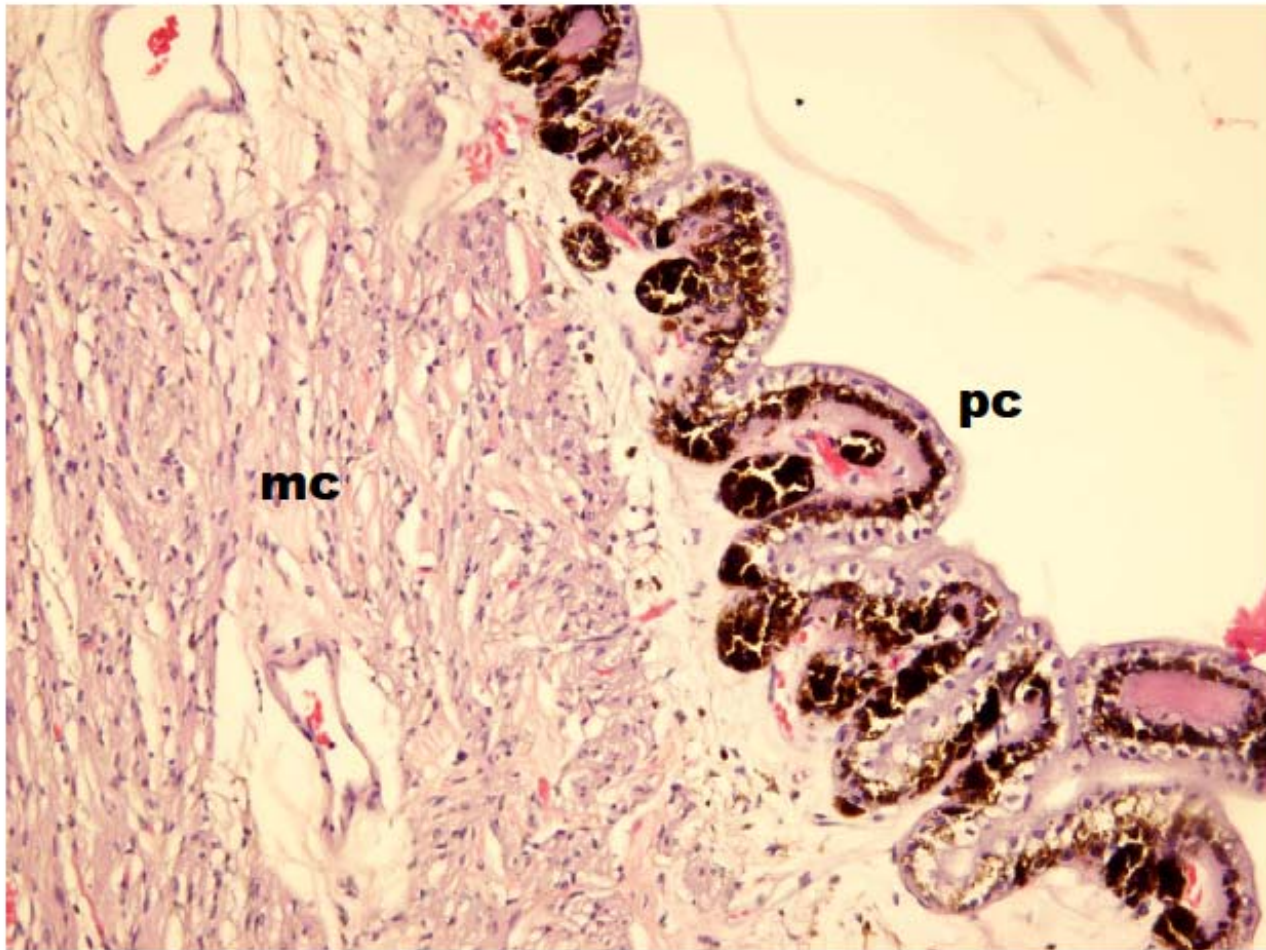
**mc: músculo ciliar, pc: procesos ciliares, c: córnea, i: iris**



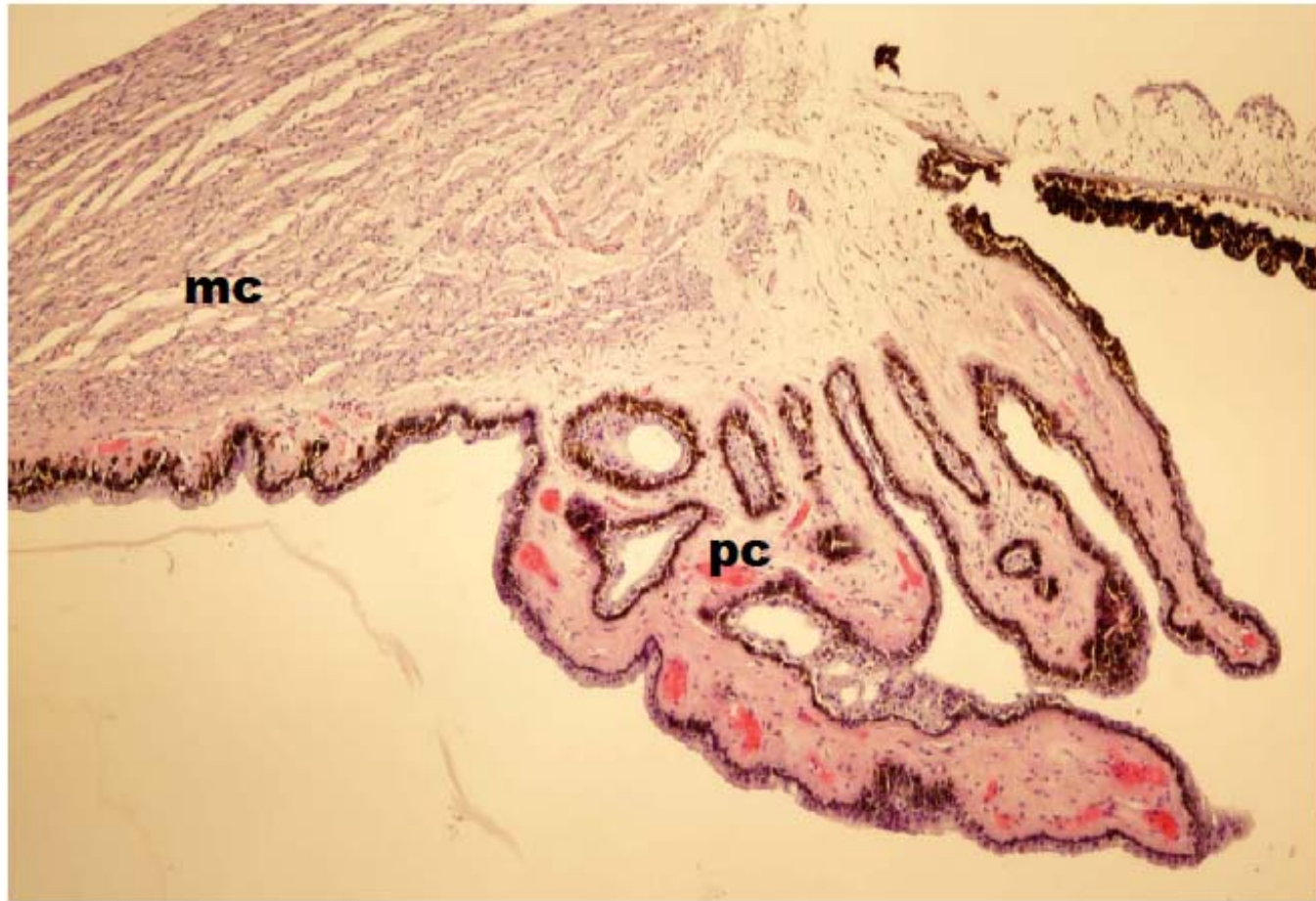


**mc: músculo ciliar, pc: procesos ciliares, i: iris**



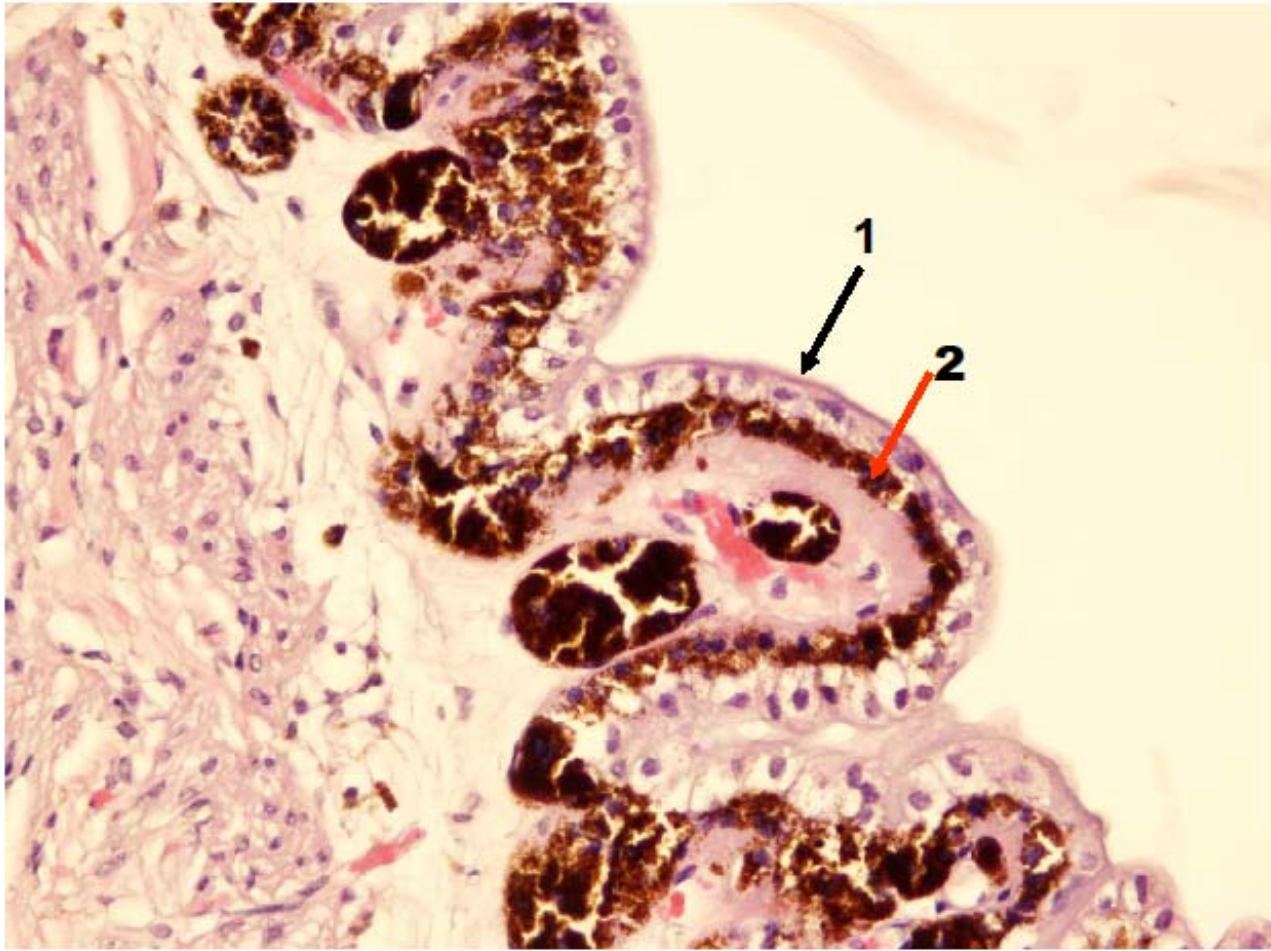


mc: músculo ciliar, pc: procesos ciliares



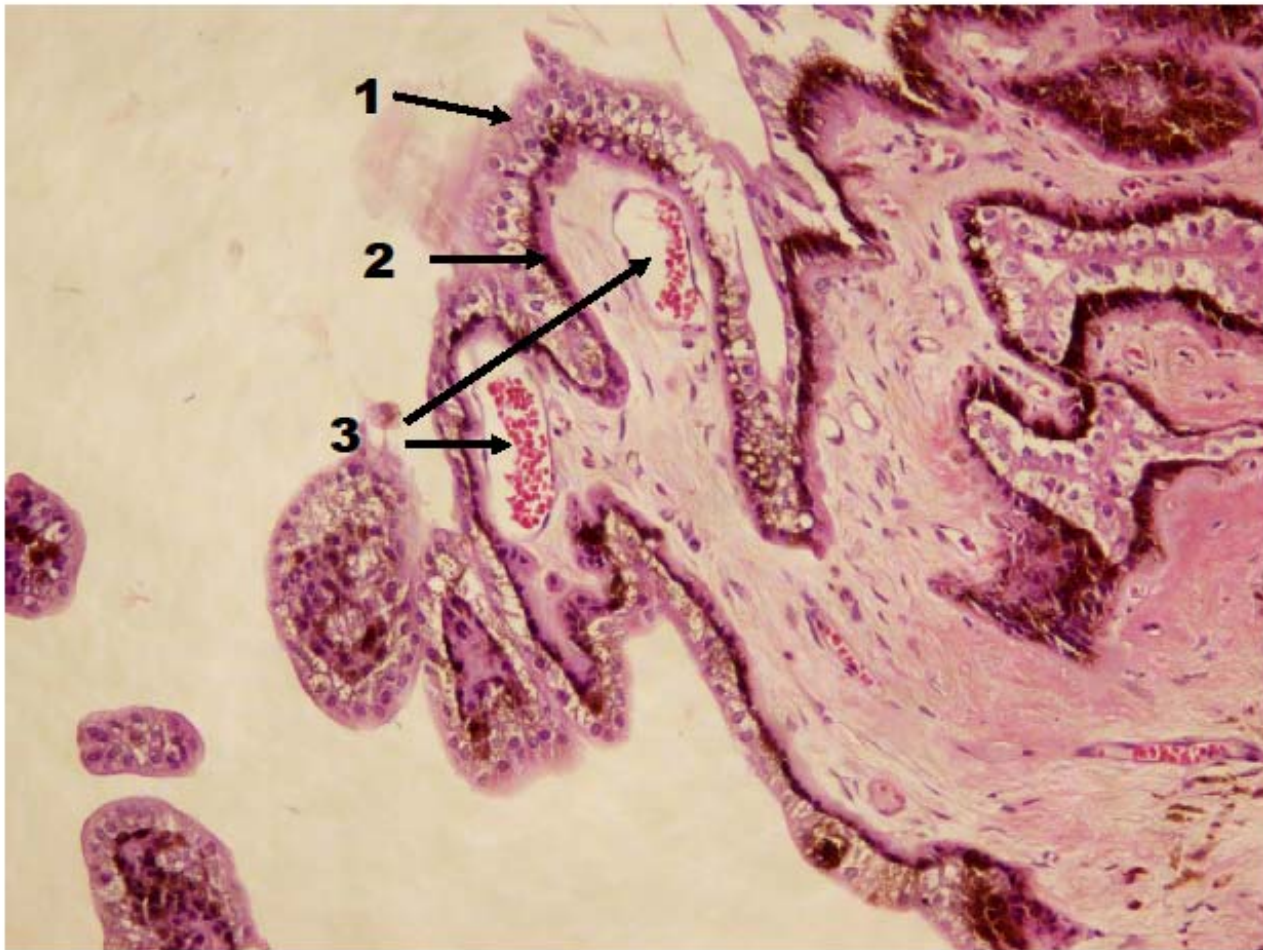
**mc: músculo ciliar, pc: procesos ciliares**



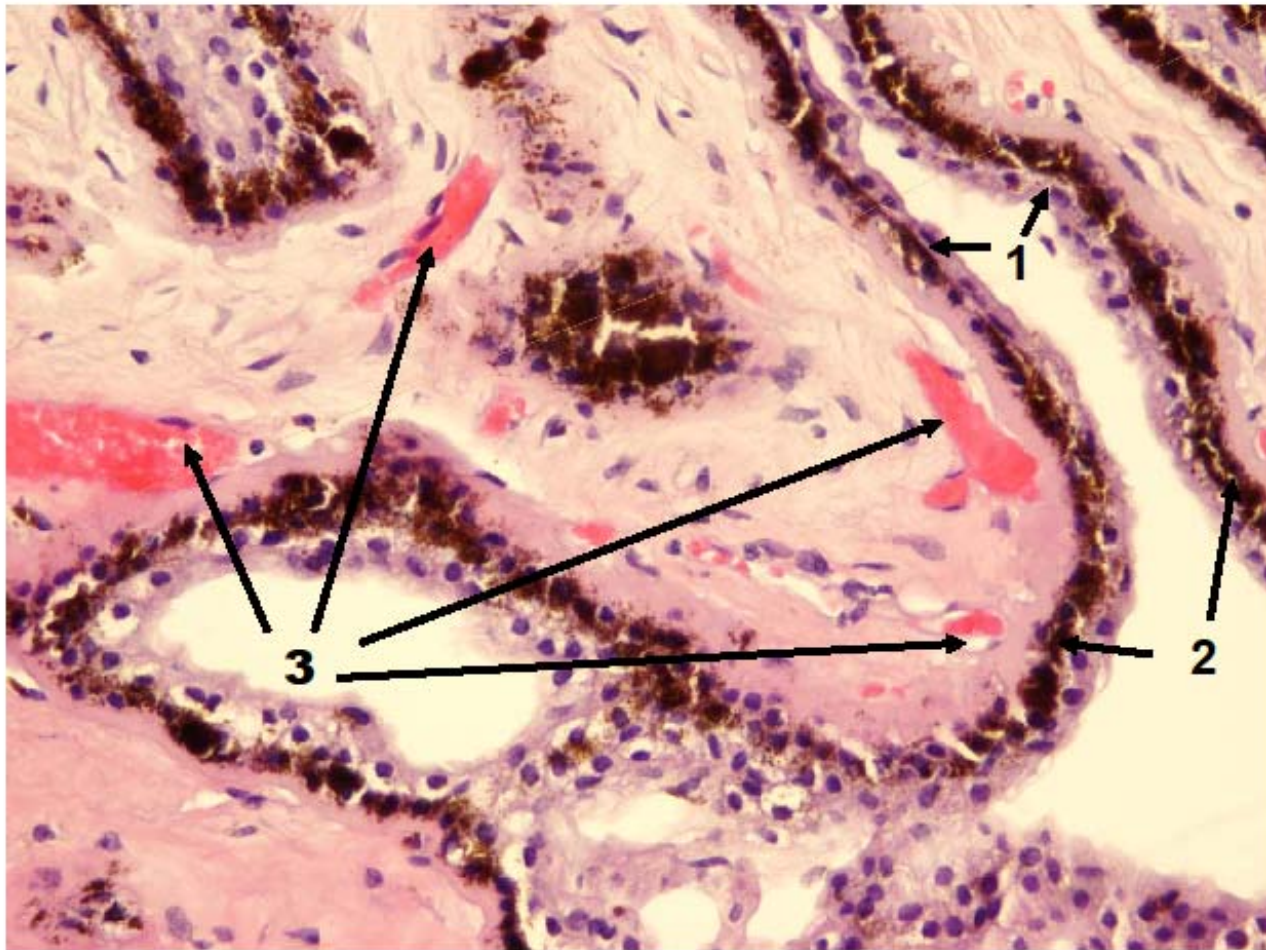


**Procesos ciliares: 1: epitelio ciliar claro, 2: epitelio pigmentario**



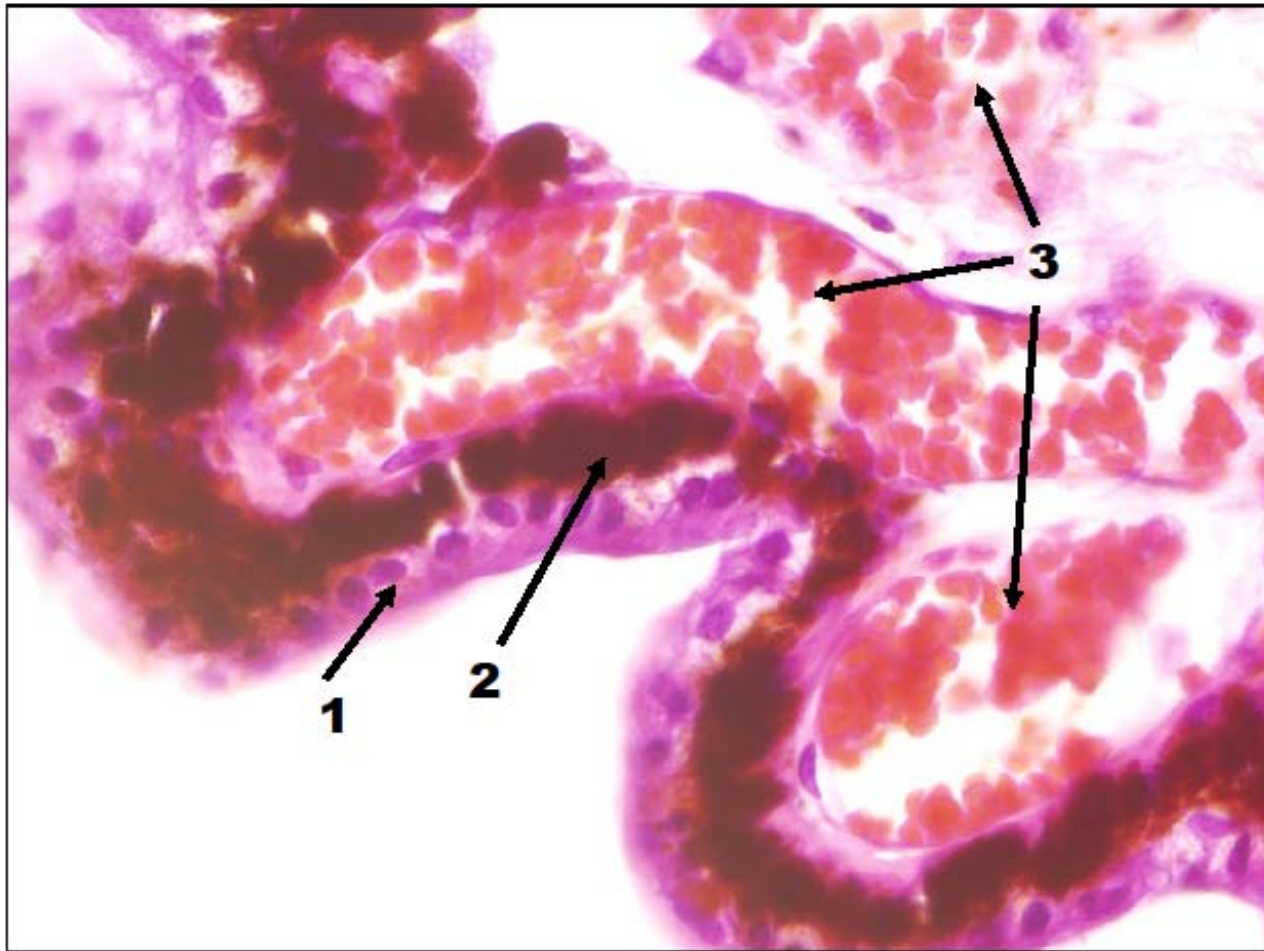


**Procesos ciliares: 1: epitelio ciliar claro, 2: epitelio pigmentario, 3: vasos**



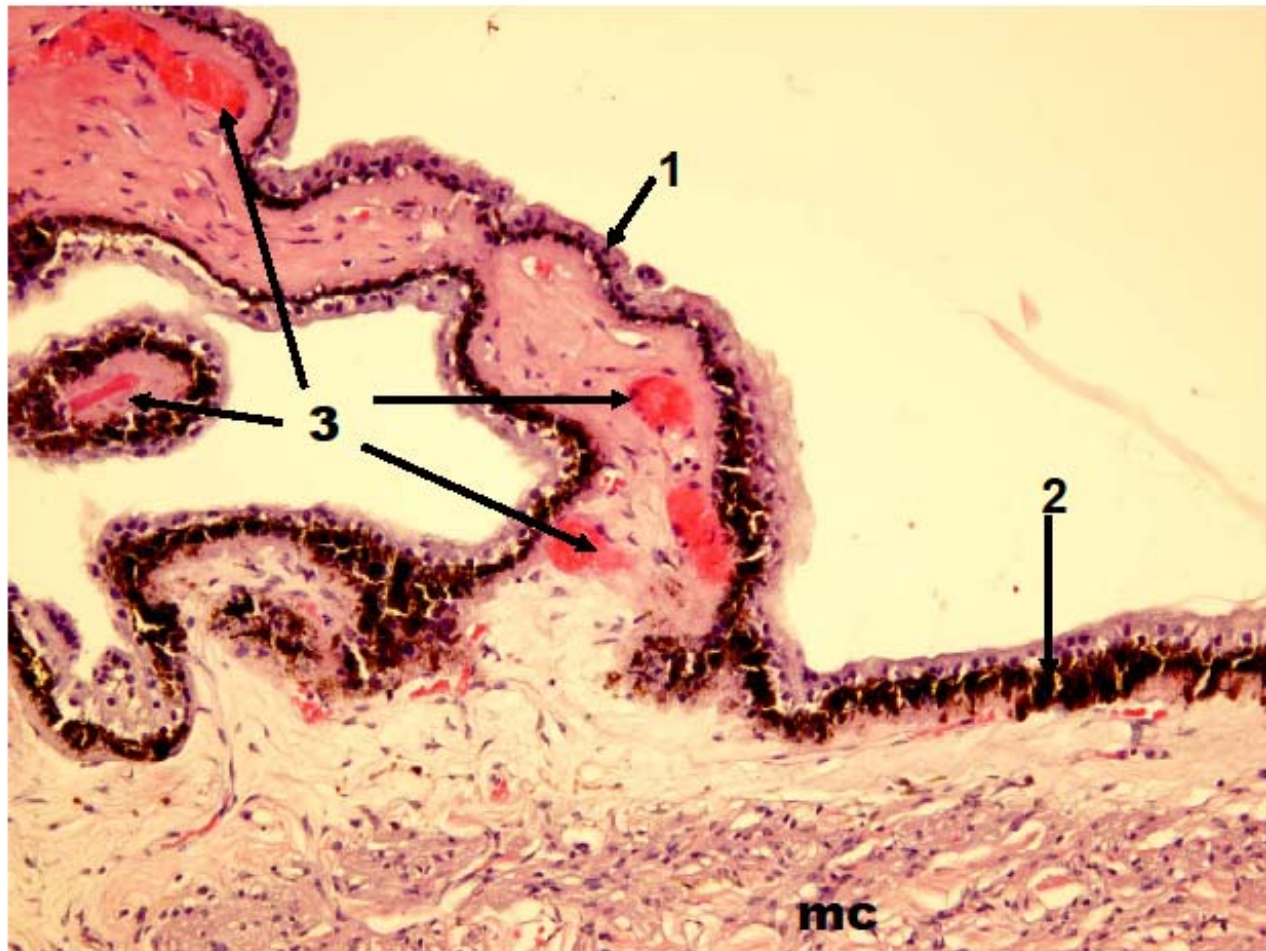
**Procesos ciliares: 1: epitelio ciliar claro, 2: epitelio pigmentario, 3: vasos**



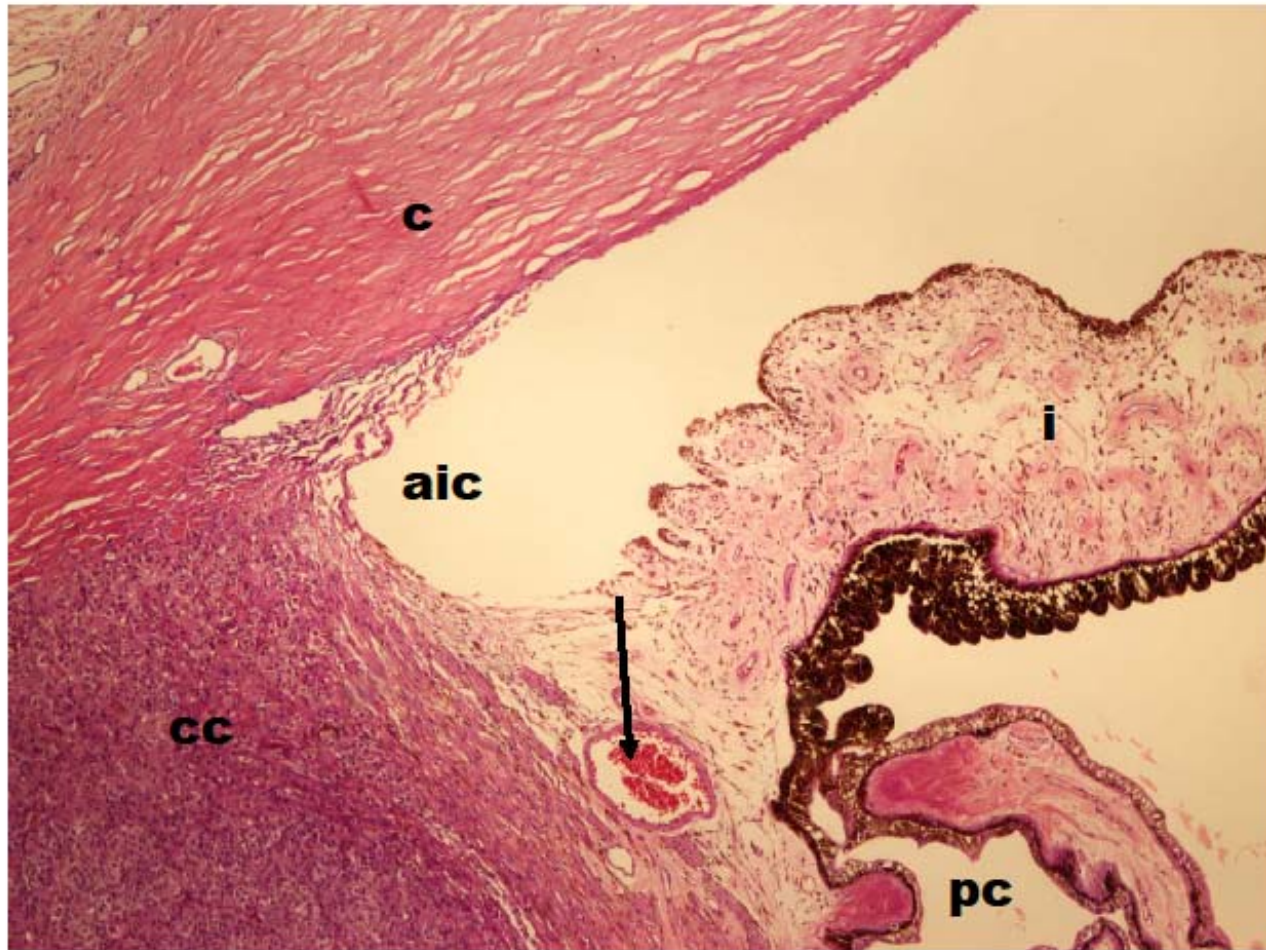


**Procesos ciliares: 1: epitelio ciliar claro, 2: epitelio pigmentario, 3: vasos**



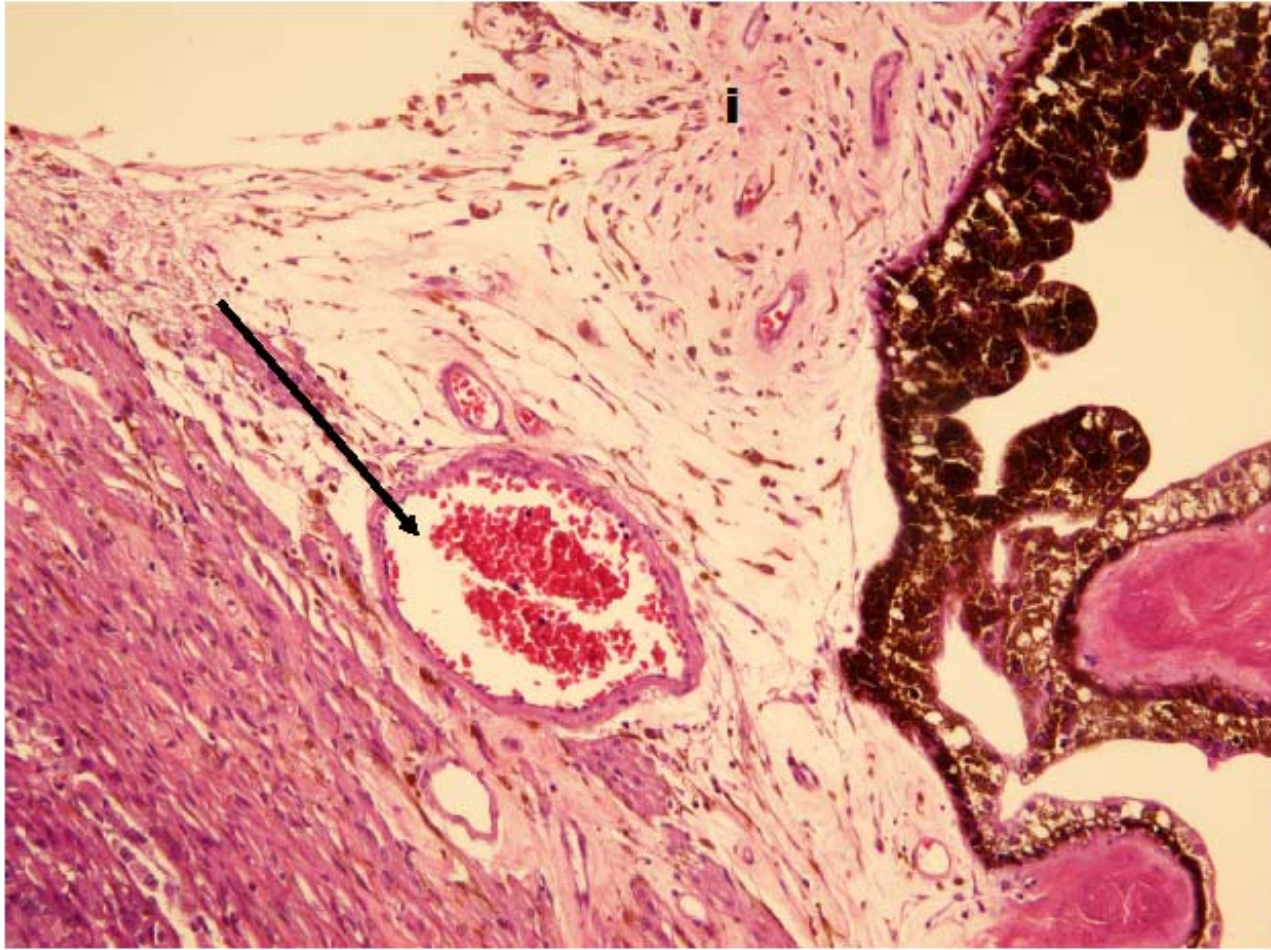


**Procesos ciliares: 1: epitelio ciliar claro, 2: epitelio pigmentario, 3: vasos, mc: músculo ciliar**



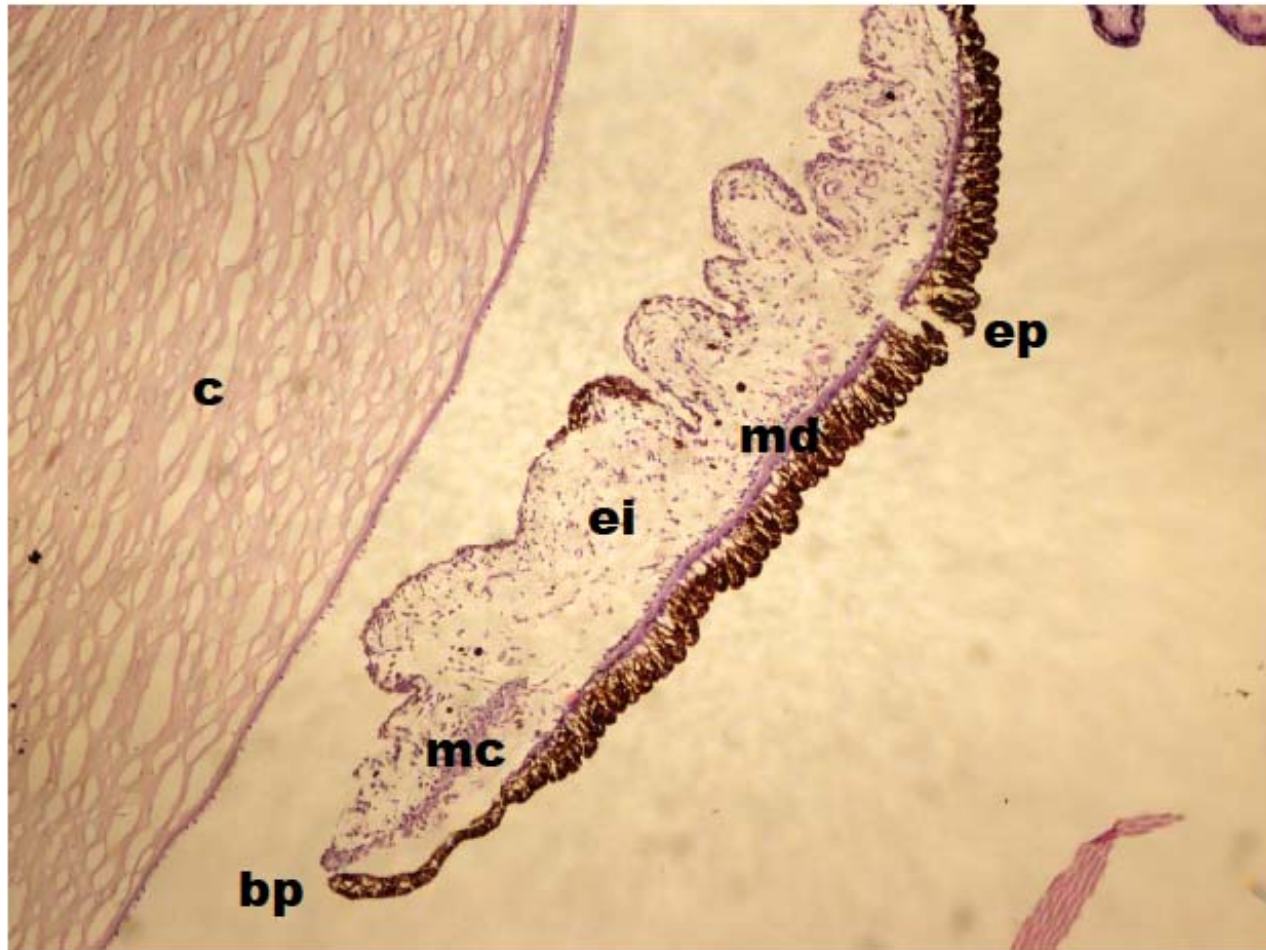
**cc: cuerpo ciliar, c: córnea, i: iris, pc: procesos ciliares, círculo arterioso mayor del iris (flecha), aic: ángulo iridocorneal**





**Flecha: Círculo arterial mayor del iris, i: iris**





**c: córnea, i: iris, ei: estroma del iris, md: músculo dilatador, mc: músculo constrictor, ep: epitelio pigmentario, bp: borde pupilar**



**c: córnea, i: iris, ei: estroma del iris, md: músculo dilatador, mc: músculo constrictor, ep: epitelio pigmentario, bp: borde pupilar**

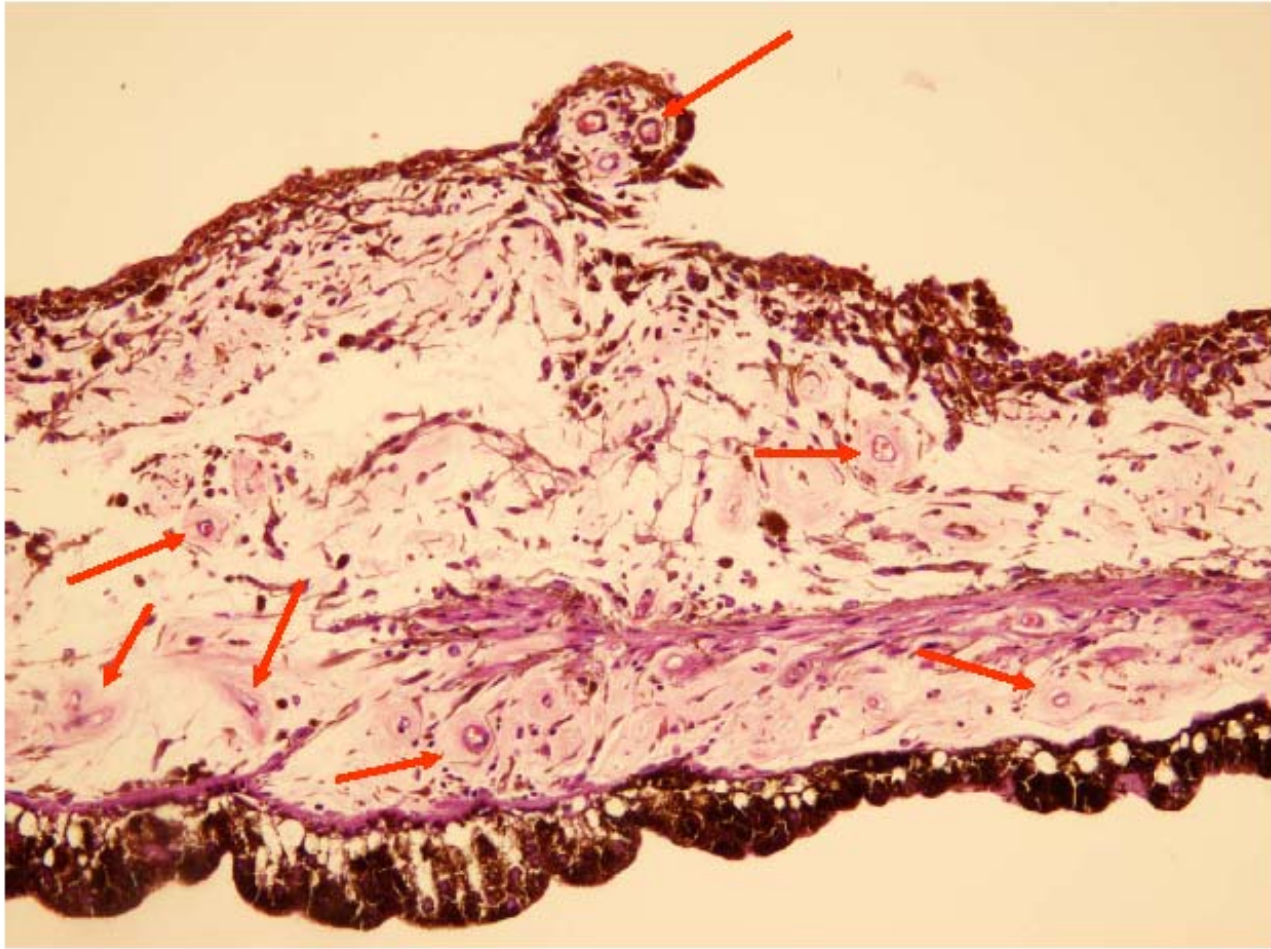


**c: córnea, ei: estroma del iris, md: músculo dilatador, mc: músculo constrictor, ep: epitelio pigmentario**



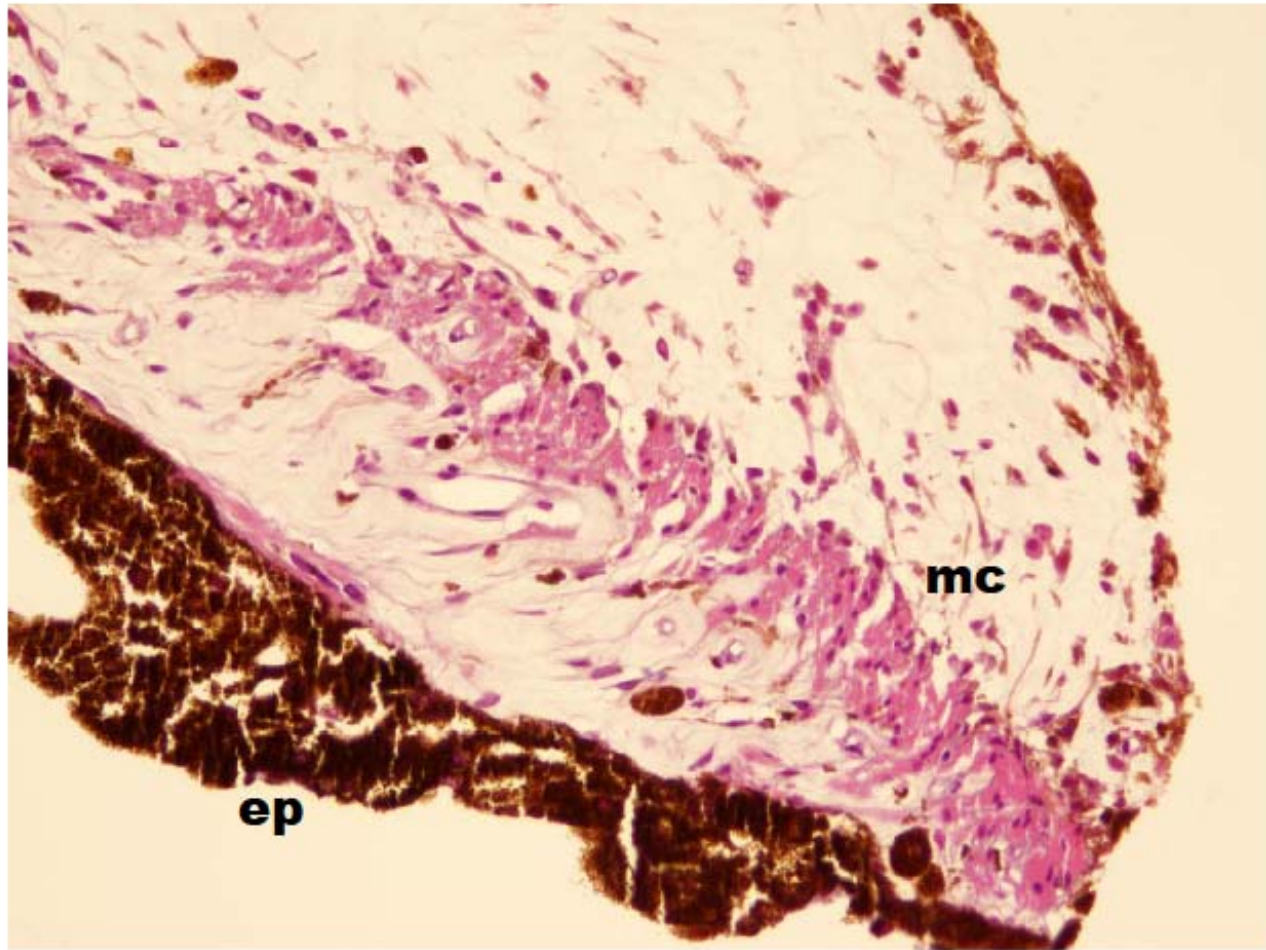


**ei: estroma del iris, md: músculo dilatador, mc: músculo constrictor, ep: epitelio pigmentario doble**



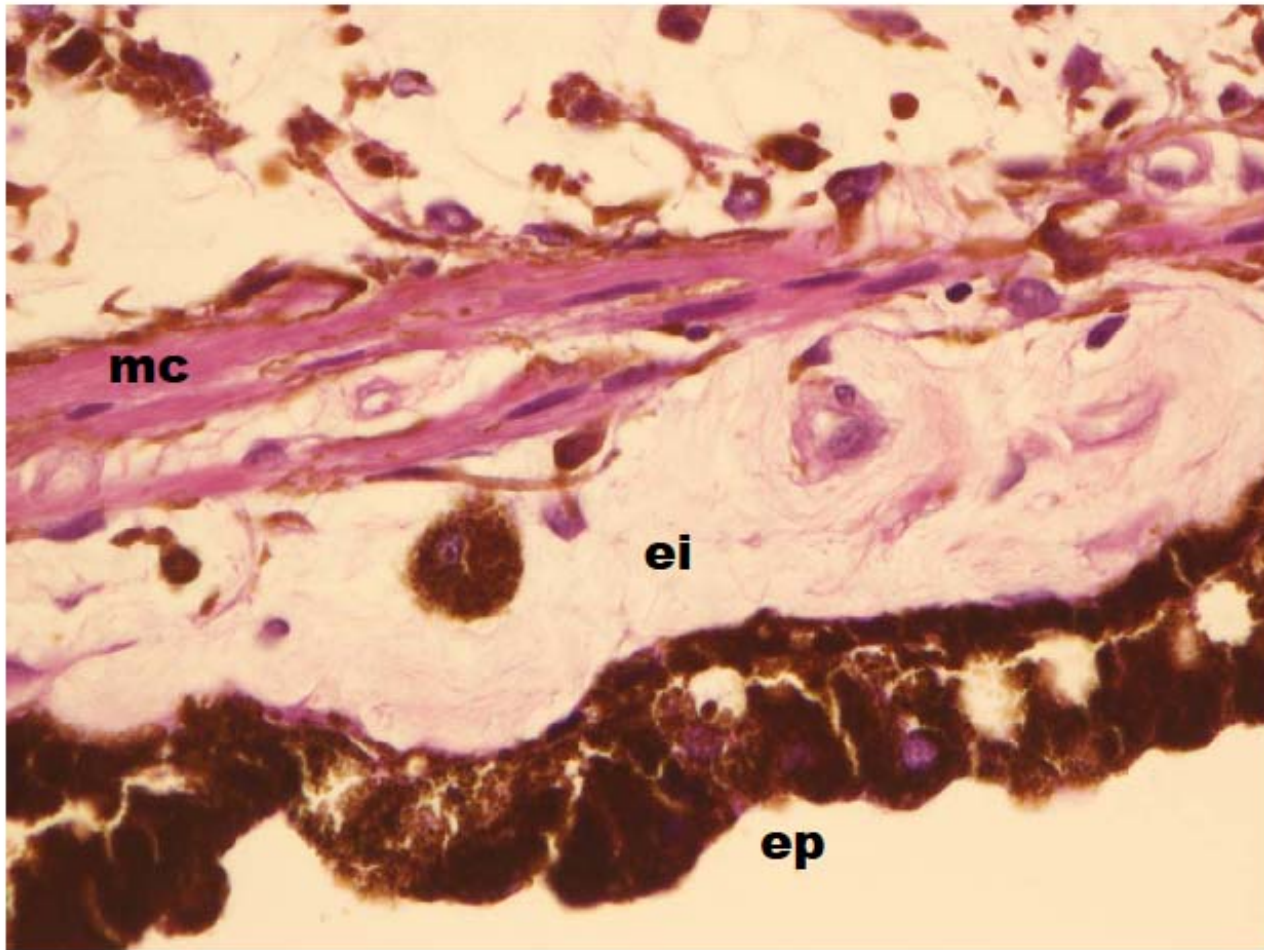
**Iris, vasos sanguíneos (flechas)**



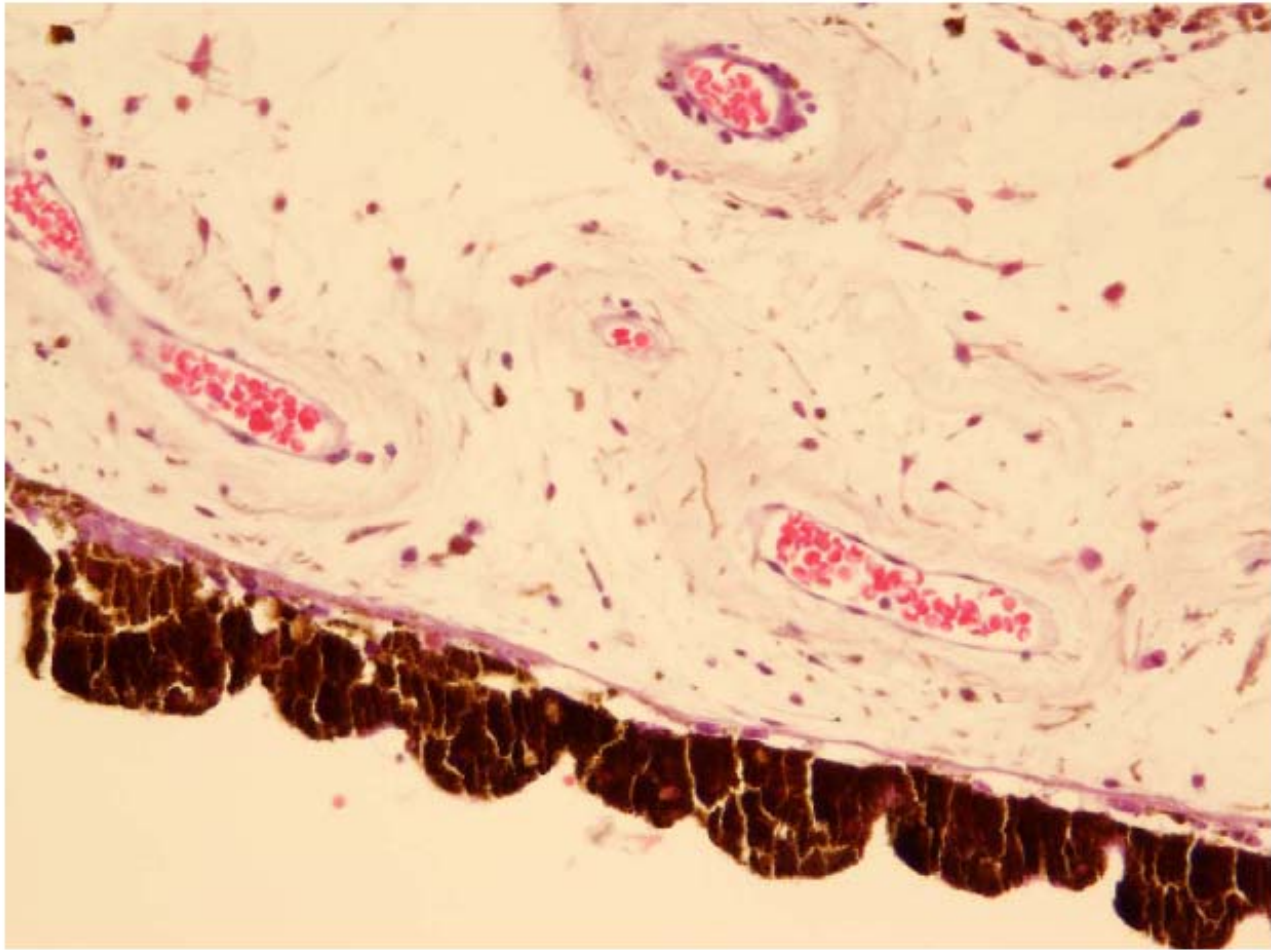


**Iris, mc: músculo constrictor del iris, ep: epitelio pigmentario**

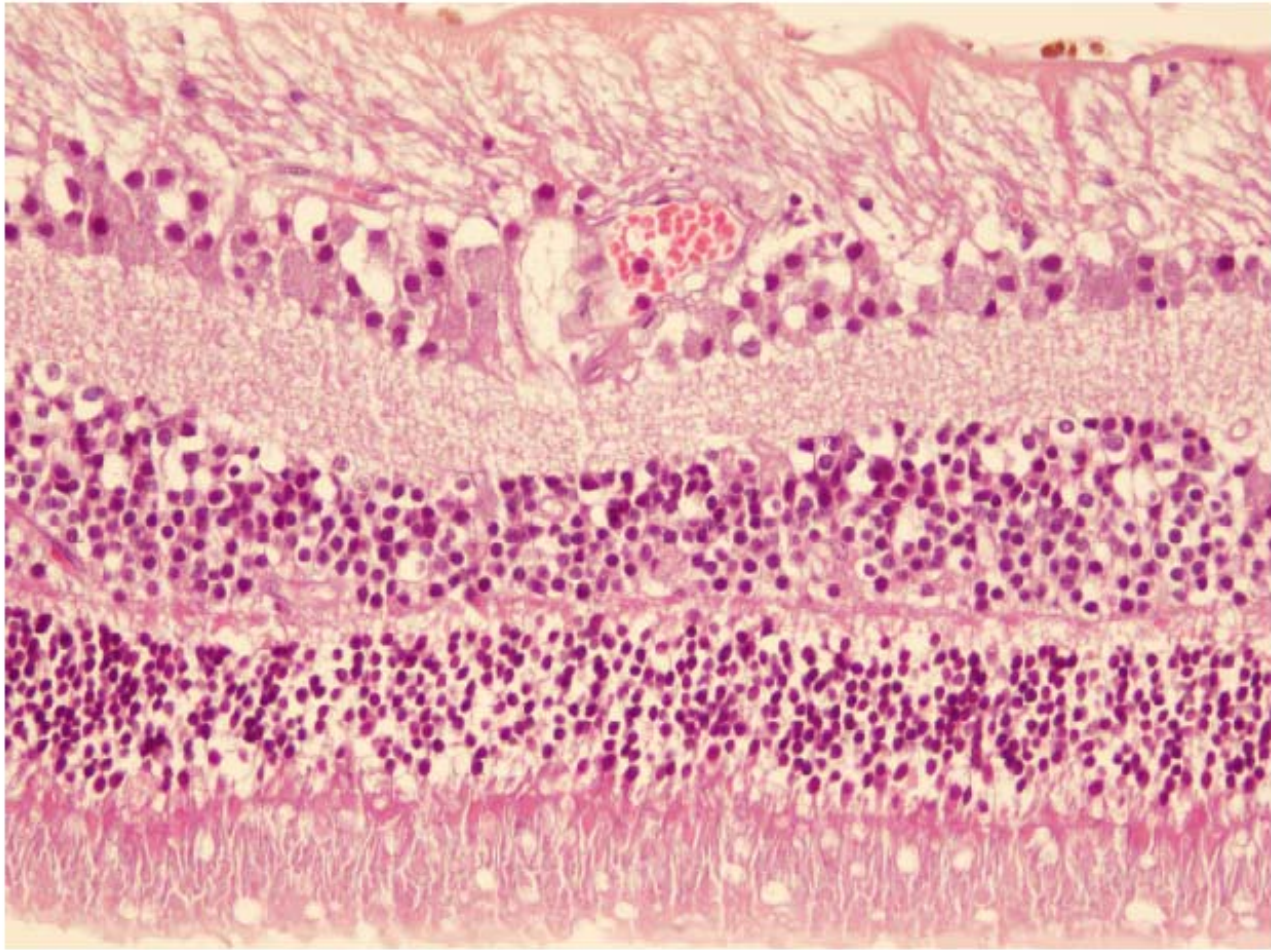




**ei: estroma del iris, mc: músculo constrictor, ep: epitelio pigmentario doble**

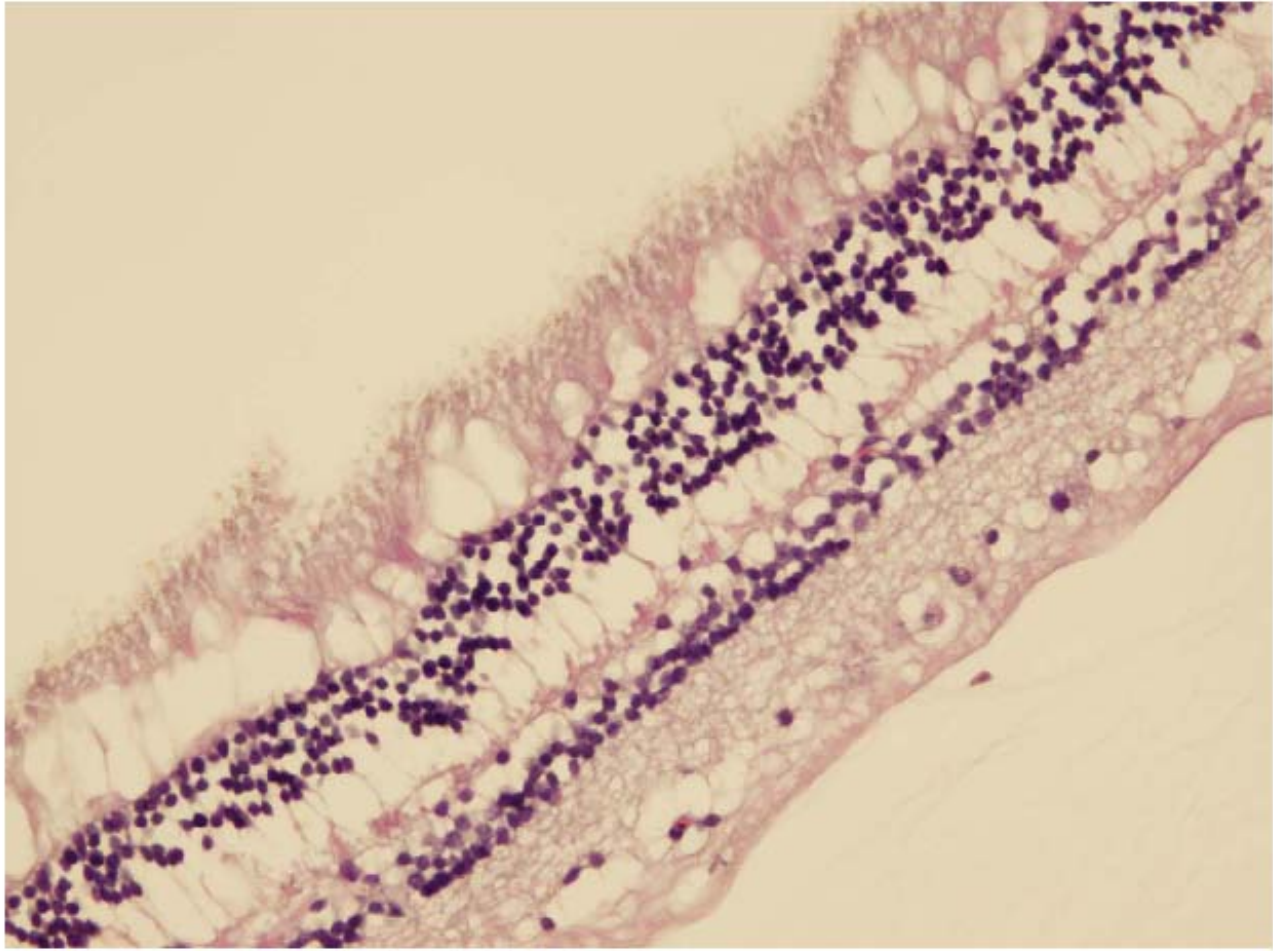


**Iris: vasos y capas anterior y posterior del epitelio pigmentario doble del iris**

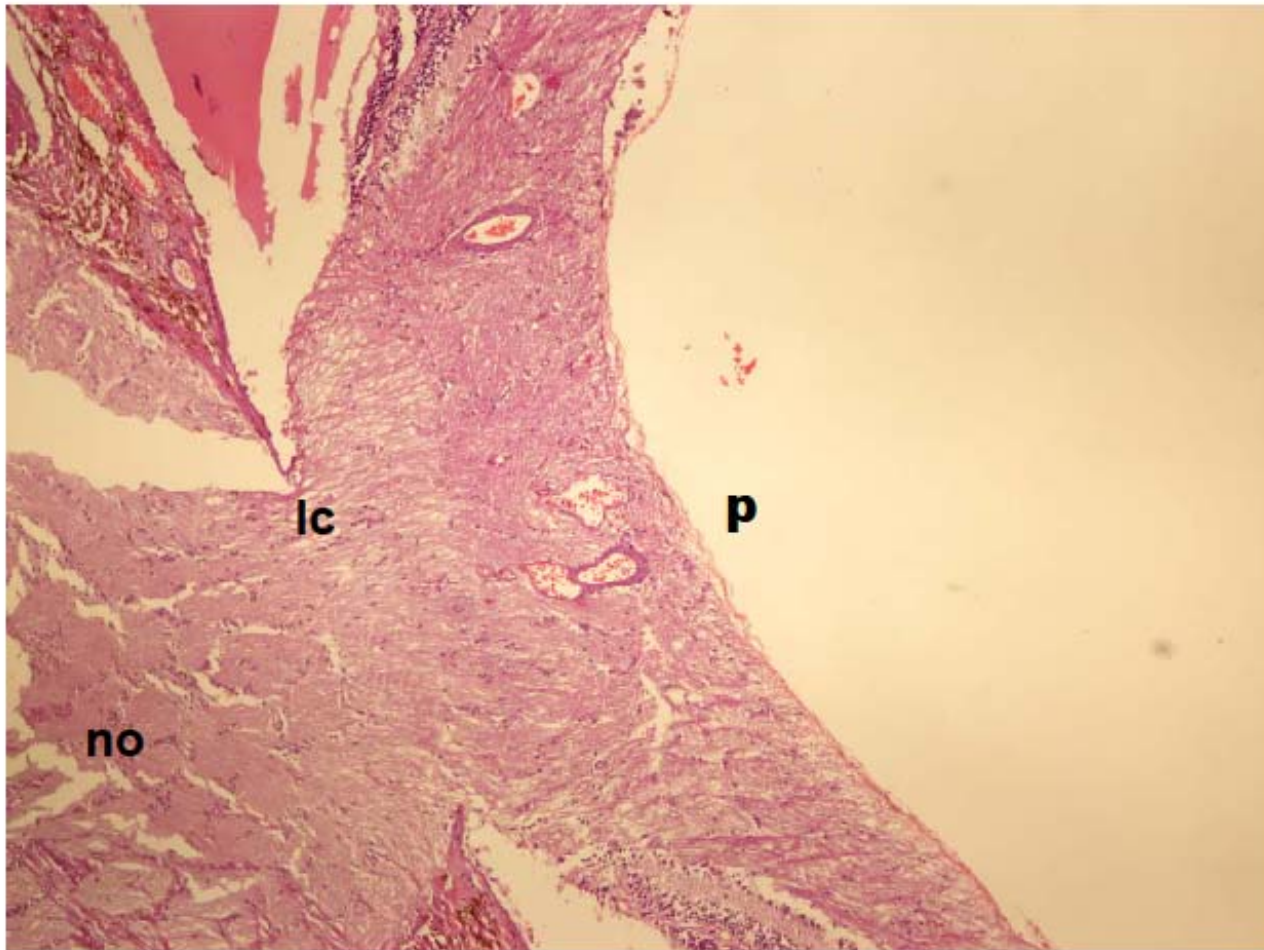


**retina**

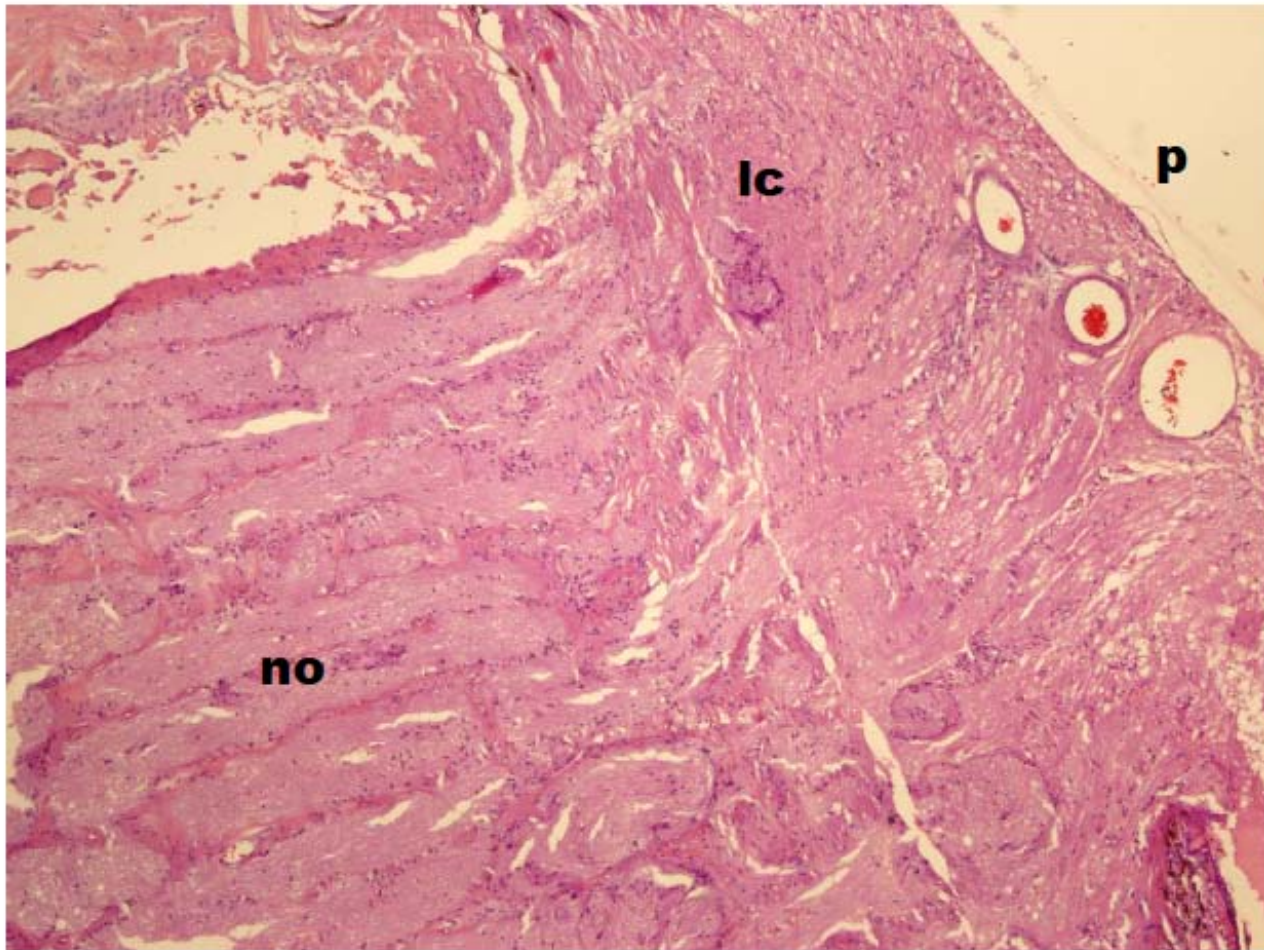




**retina**

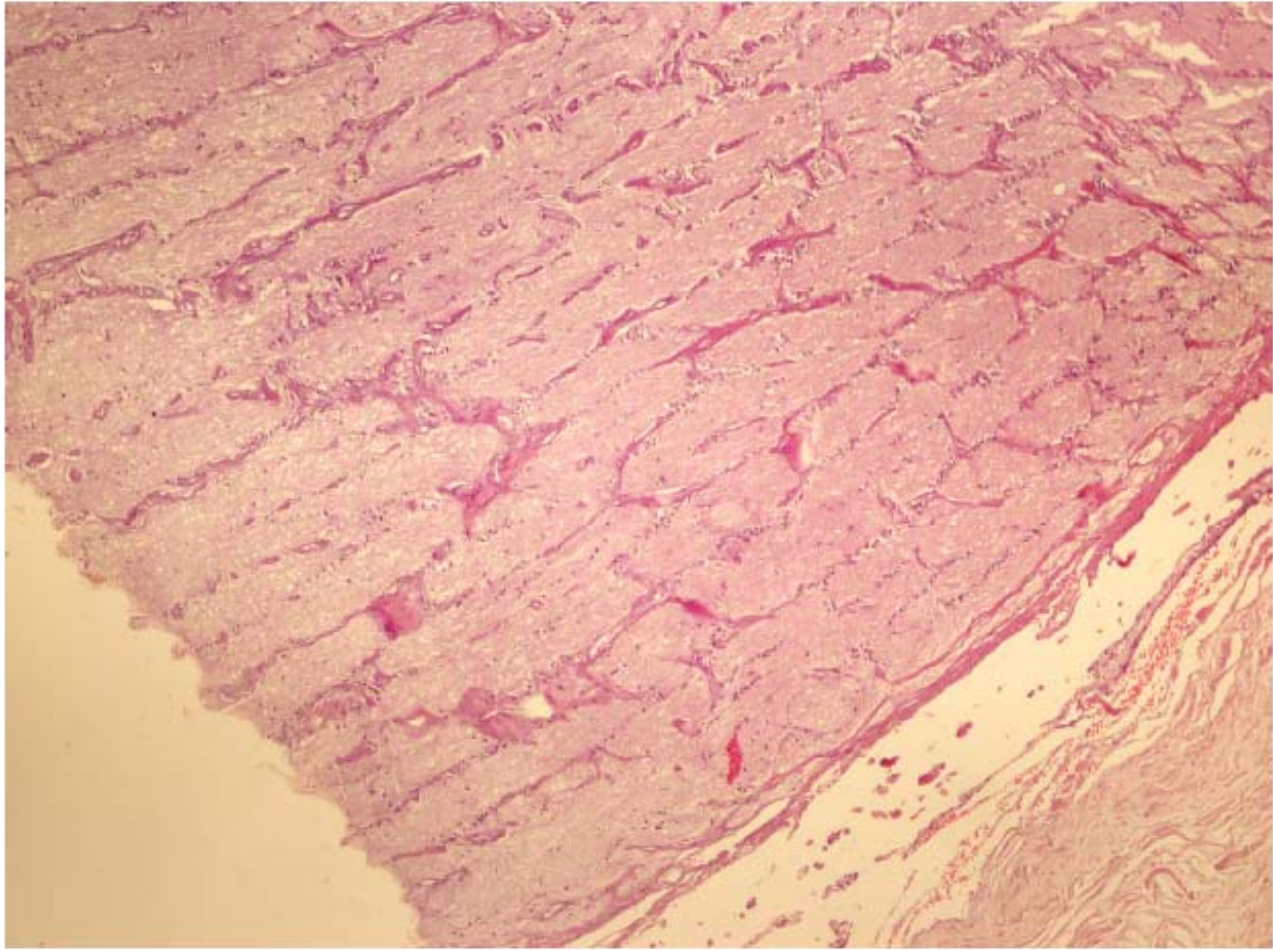


**p: papila (salida del nervio óptico), lc: lámina cribrosa,  
no: nervio óptico**



**p: papila (salida del nervio óptico), lc: lámina cribrosa, no: nervio óptico**





**Nervio óptico**